

FC SERIES 2HP GRINDER PUMPS



Model: FC2-21 FC2-21C
FHC2-21 FHC2-21C
FC2-23 FHC2-23



SPECIFICATIONS:

DISCHARGE ----- 1.25" NPT
LIQUID TEMPERATURE --- 120 degrees F (Continuous)
 140 degrees F (Intermittent)
MOTOR HOUSING----- Cast Iron, ASTM A-48, Class 30
CORD CAP ----- Cast Iron, ASTM A-48, Class 30
VOLUTE ----- Cast Iron, ASTM A-48, Class 30
SEAL PLATE ----- Cast Iron, ASTM A-48, Class 30
IMPELLER ----- Ductile Iron, 10 vane, Open with
 Pump-out Vanes, Dynamically Balanced
SLICER-IMPELLER ---- Hardened 440C Stainless Steel
 56-60 Rockwell C
PLATE-SLICER ----- Hardened 440C Stainless Steel
 56-60 Rockwell C
SHAFT ----- 420 Stainless Steel
SHAFT SEAL--- Mechanical Main (Motor) Secondary(Pump)
 Carbide – Rotating Face Silicon – Rotating Face
 Silicon– Stationary Face Silicon – Stationary Face
 Buna-N - Elastomer
BEARING (UPPER) ---- Single Row, Ball, Oil Lubricated
BEARING (LOWER)---- Single Row, Ball, Oil Lubricated
SLEEVE BEARING ---- Bronze with Oil Groove
HARDWARE----- 300 Series Stainless Steel
O-RINGS ----- Buna-N
CORD ENTRY ----- 30Ft Cord
 Triple Sealed Design
 Compression Grommet – Outer Jacket Seal
 Epoxy Potted – Inner Conductor Seal
 Butt Connector – Inner Wire Strand
 Wicking Blockage
MOTOR (THREE PHASE) --- 2 HP, 3450 RPM, 60 Hz
 Tri-voltage, 200/230/460 volts.
 On-Winding temperature sensor
 Oil Filled, Class F
MOTOR (SINGLE PHASE) --- 2 HP, 3450 RPM, 60 Hz
 Dual-voltage, 200/230 volts
 Overload Protection in the Motor
 Oil Filled, Class F
 Capacitor Start/Capacitor Run
OPTIONAL EQUIPMENT --- Seal Materials
 Additional Cable Lengths
 Leg Kits

Features:

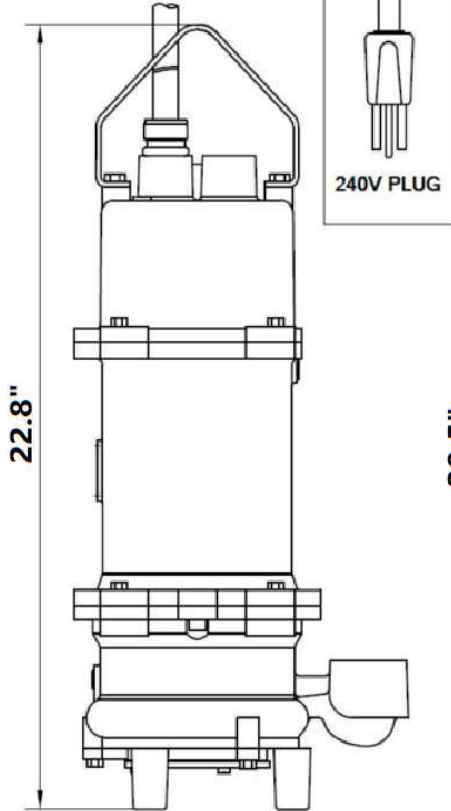
- *New Slicer cutter technology*
- *Stainless steel impeller*
- *Internal or external capacitor models*
- *300 Series SS Rotor Shaft*



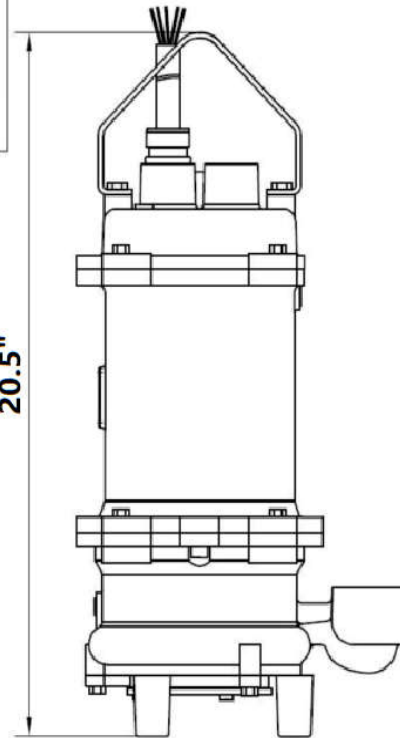


FC SERIES 2HP GRINDER PUMPS

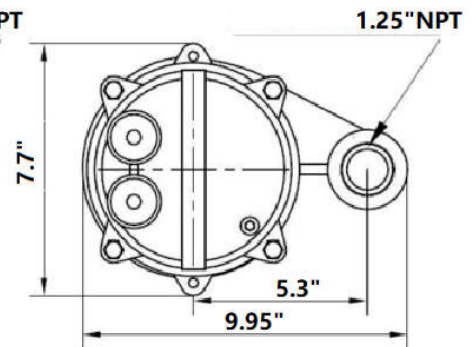
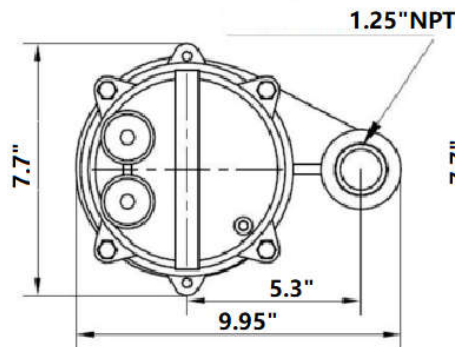
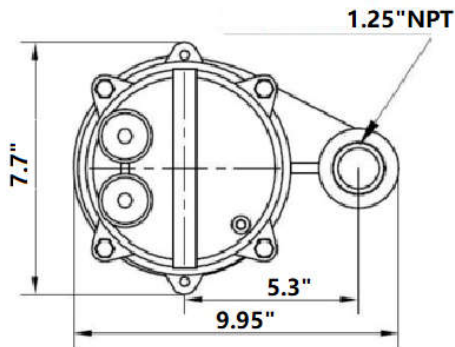
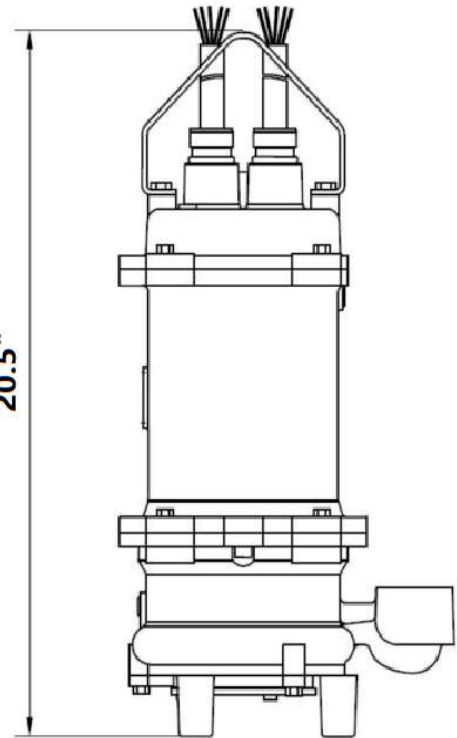
Internal Capacitor
FC2-21C
FHC2-21C



External Capacitor
FC2-21
FHC2-21



Three Phases
FC2-23
FHC2-23



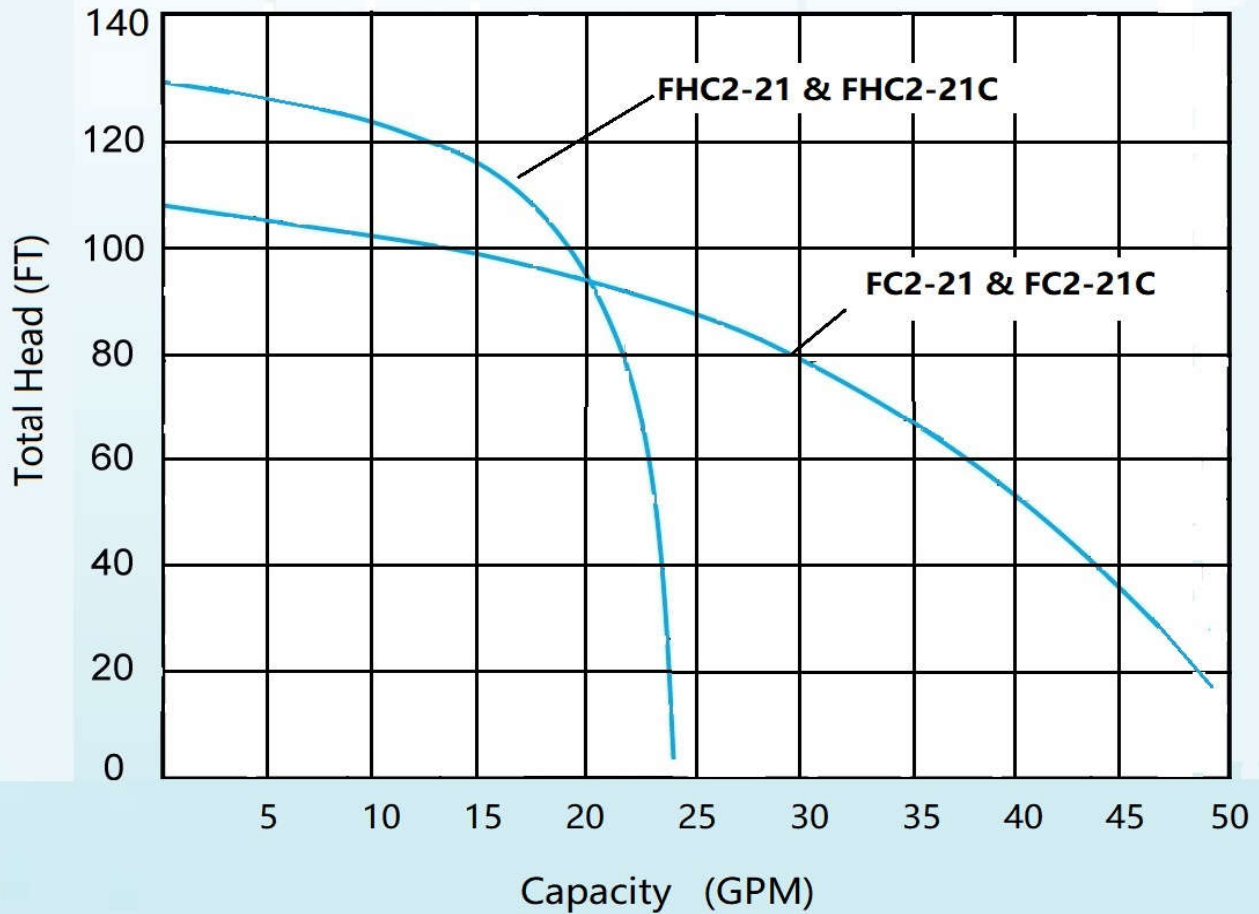
IMPORTANT:

- 1 PUMP MAY BE OPERATED "DRY" FOR EXTENDED PERIODS WITHOUT DAMAGE TO MOTOR AND/OR SEALS
- 2 THIS PUMP IS APPROPRIATE FOR THOSE APPLICATIONS SPECIFIED AS CLASS I DIVISION II HAZARDOUS LOCATIONS.
- 3 THIS PUMP IS NOT APPROPRIATE FOR THOSE APPLICATIONS SPECIFIED AS CALSS I DIVISION I HAZARDOUS LOCATIONS.
- 4 INSTALLATIONS SUCH AS DECORATIVE FOUNTAINS OR WATER FEATURES PROVIDED FOR VISUAL ENJOYMENT MUST BE INSTALLED IN ACCORDANCE WITH THE NATIONAL ELECTRIC CODE ANSI/NFPA 70 AND/OR THE AUTHORITY HAVING JURISDICTION. THIS PUMP IS NOT INTENDED FOR USED IN SWIMMING POOLS, RECREATIONAL WATER PARKS, OR INSTALLATIONS IN WHICH HUMAN CONTACT WITH PUMPED MEDIA IS A COMMON OCCURRENCE.

FC SERIES 2HP GRINDER PUMPS

PERFORMANCE CURVE

**MODEL: FC2-21 & FC2-21C
FHC2-21 & FHC2-21C**

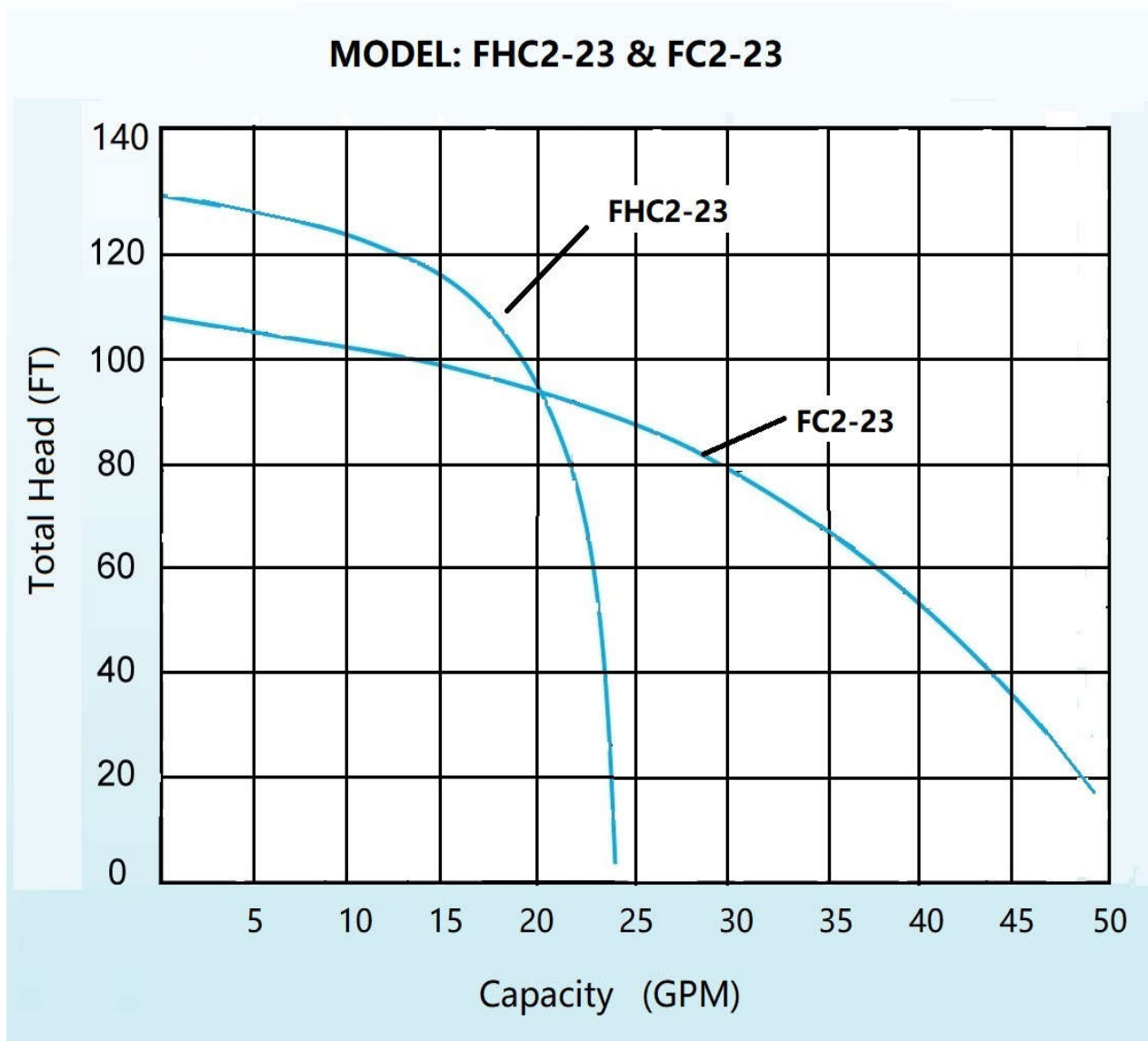


MODULE	HP	VOLT	PH/Hz	RPM	FULL LOAD AMPS	LOCKED ROTOR AMPS	CORD SIZE	CORD TYPE	WEIGHT (LBS)
FC2-21C	2	230	1/60	3450	14.5	23	14AWG/3	SOOW	75
FHC2-21C									75
FC2-21							14AWG/5		74
FHC2-21									74

- FC2-21C and FHC2-21C feature internal capacitors and do not require a separate control panel for operation.
- FC2-21 and FHC2-21 features external capacitors, requiring a panel with appropriately sized start and run capacitors.
- Testing is performed with water, specific gravity 1.0 @ 38°F @ (20°C), other fluids may vary performance.

FC SERIES 2HP GRINDER PUMPS

PERFORMANCE CURVE



MODULE	HP	VOLT	PH/Hz	RPM	FULL LOAD AMPS	LOCKED ROTOR AMPS	CORD SIZE	CORD TYPE	WEIGHT (LBS)
FC2-23	2	230	3/60	3450	8.8	22.5	14AWG/4	SOOW	74
FHC2-23									74

- 3-phase models require a properly sized control panel
- Testing is performed with water, specific gravity 1.0 @ 38°F @ (20°C), other fluids may vary performance.