



F&Q Pumps Inc. is pleased to provide this products catalog for your use. F&Q Pumps strives to provide you with the most current information about our submersible sewage pumps, solids-handling pumps, grinder pumps, sump & effluent pumps, SST pumps, submersible motors, mixers, controls, and accessories. Please feel free to review, select, and specify our products.



About F&Q Pumps Inc.

For over four decades, F&Q Pumps has engineered and manufactured high-performance, durable pumps and pumping systems designed to meet the demanding needs of:

- Residential & Commercial
- Municipal water & wastewater
- Industrial and Construction sectors
- OEM applications

Our Product Line

We supply a comprehensive range of submersible pumps and accessories, including:

- Sewage pumps
- Solids handling non-clog pumps
- Grinder pumps
- Stainless steel pumps
- Sump & Utility pumps
- Submersible motors & Mixers
- Pump base elbow & Control panels

Why Choose F&Q Pumps?

- **Reliability:** Engineered for long service life
- **Energy efficiency:** Optimized performance with lower operating costs
- **Affordability:** Competitive pricing without compromising quality
- **Customer-focused:** Dedicated to your complete satisfaction

10617 E. Rush Street
S. El Monte, CA 91733
Ph: 626-455-0884
Fax: 626-448-9462
www.fqpumps.com
sales@fqpumps.com



CFE Effluent Pumps



SPECIFICATIONS:

- DISCHARGE** 1-1/2" NPT, Vertical
- LIQUID TEMPERATURE..** 104°F(40°C) Continuous
- VOLUTE** Cast Iron ASTM A-48,Class 30
- MOTOR HOUSING** Cast Iron ASTM A-48,Class 30
- SEAL PLATE** Cast Iron ASTM A-48,Class 30
- IMPELLER** Cast Iron ASTM A-48,Class 30
10 Vane, Recessed Type
Dynamically Balanced,ISO G6.3
- SHAFT** 420 Stainless Steel
- O RING** Buna-N
- SEAL** Single Seal, Silicon Carbide
Elastomer - Buna -N
Hardware - 300 Series Stainless
- CABLE ENTRY** 20 Ft Cord w/Plug
UL &CUL 16AWG, Type SJTOW
- UPPER BEARING** Single Row, Ball, Oil lubricated
- LOWER BEARING** Single Row, Ball, Oil Lubricated
- MOTOR** Single Phase, 3450 RPM, 115V, 60 Hz
Includes Overload Protection in the
Motor, Oil Filled,Class B
Capacitor Start / Capacitor Run
- OPTIONAL EQUIPMENT:** Cord Length & Float Switch

Solids Handling: Up to 3/4" Dia.

KEY FEATURES:

Model: CFE40A, 4/10HP
CFE40M, 4/10HP
CFE50A, 1/2HP
CFE50M, 1/2HP

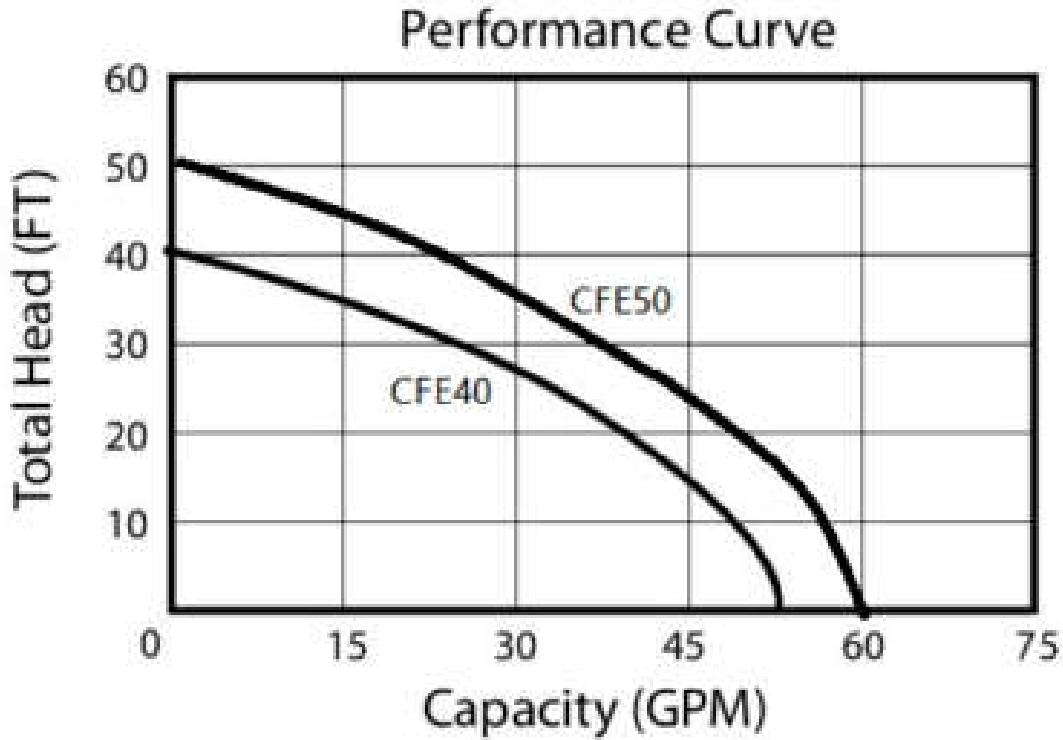
- 3/4" Solids-Handling
- Heavy-Duty Mechanical Seal
- Recessed, Clog-Free Impeller
- Durable, All Cast Iron Construction
- Dependable Operation
- Automatic and Manual Models



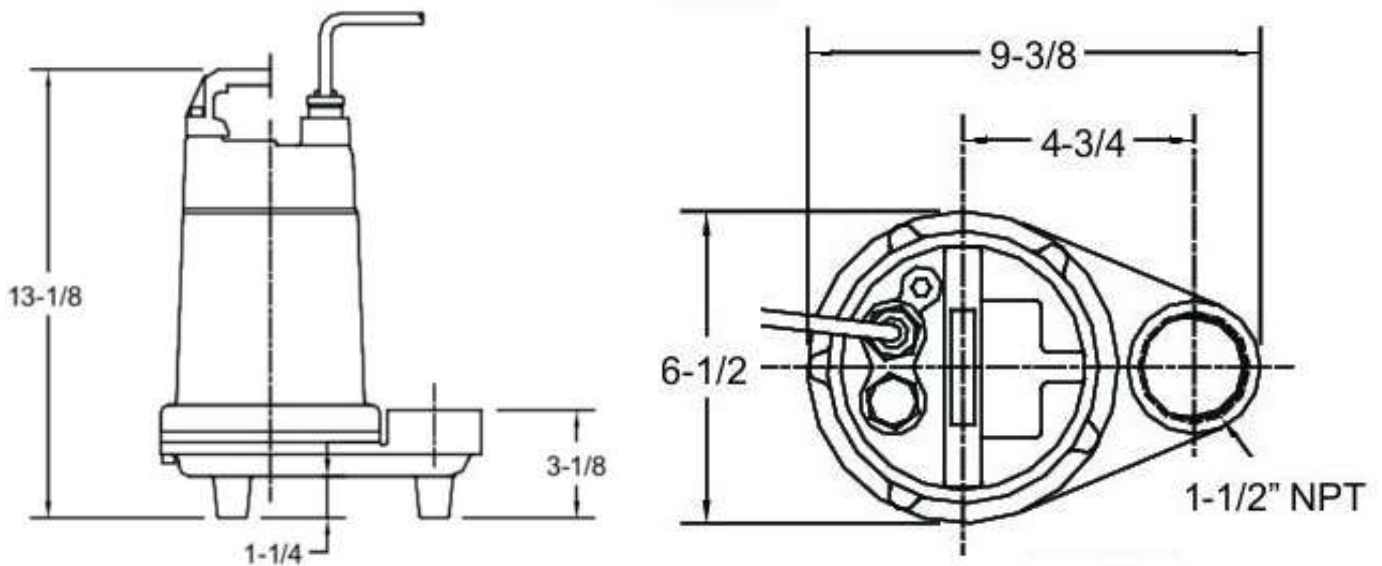
ELECTRICAL DATA:

| MODEL | HP | Volt. | Ph/Hz | RPM | Full Load Amps | Locked Rotor Amps | Switch Type | Cord Size | Weight (lbs) |
|--------|------|-------|-------|------|----------------|-------------------|-------------|-----------|--------------|
| CFE40M | 4/10 | 115 | 1/60 | 3450 | 8 | 20 | Manual | 16/3 | 28 |
| CFE40A | 4/10 | 115 | 1/60 | 3450 | 8 | 20 | Automatic | 16/3 | 29 |
| CFE50M | 1/2 | 115 | 1/60 | 3450 | 8 | 20 | Manual | 16/3 | 29 |
| CFE50A | 1/2 | 115 | 1/60 | 3450 | 8 | 20 | Automatic | 16/3 | 30 |

PERFORMANCE CURVE



PUMP SIZE



CFS50 1/2HP Sump Pumps



SPECIFICATIONS:

- DISCHARGE** 2" NPT,Vertical
- LIQUID TEMPERATURE** 104°F(40°C) Continuous
- VOLUTE** Cast Iron ASTM A-48,Class 30
- MOTOR HOUSING** Cast Iron ASTM A-48,Class 30
- SEAL PLATE** Cast Iron ASTM A-48,Class 30
- IMPELLER** Cast Iron ASTM A-48,Class 30
10 Vane, Recessed Tyoe
Dynamically Balanced,ISO G6.3
- SHAFT** 420 Stainless Steel
- O RING** Buna-N
- SEAL** Single Seal, Silicon Carbide
Elastomer - Buna -N
Hardware - 300 Series Stainless
- CABLE ENTRY** 20 Ft Cord w/Plug
UL &CUL 16AWG, Type SJTOW
- UPPER BEARING** Single Row, Ball, Oil lubricated
- LOWER BEARING** Single Row, Ball, Oil Lubricated
- MOTOR** Single Phase, 3450 RPM, 115V, 60 Hz
Includes Overload Protection in the
Motor, Oil Filled,Class B
Capacitor Start / Capacitor Run
- OPTIONAL EQUIPMENT:** Cord Length & Float Switch

This high-performance sump/effluent pump is useful for a variety of applications such as dewatering, sump, effluent and utility.

Solids Handling: Up to 2" Dia.

**Model: CFS50A,1/2HP
CFS50M.1/2HP**



KEY FEATURES:

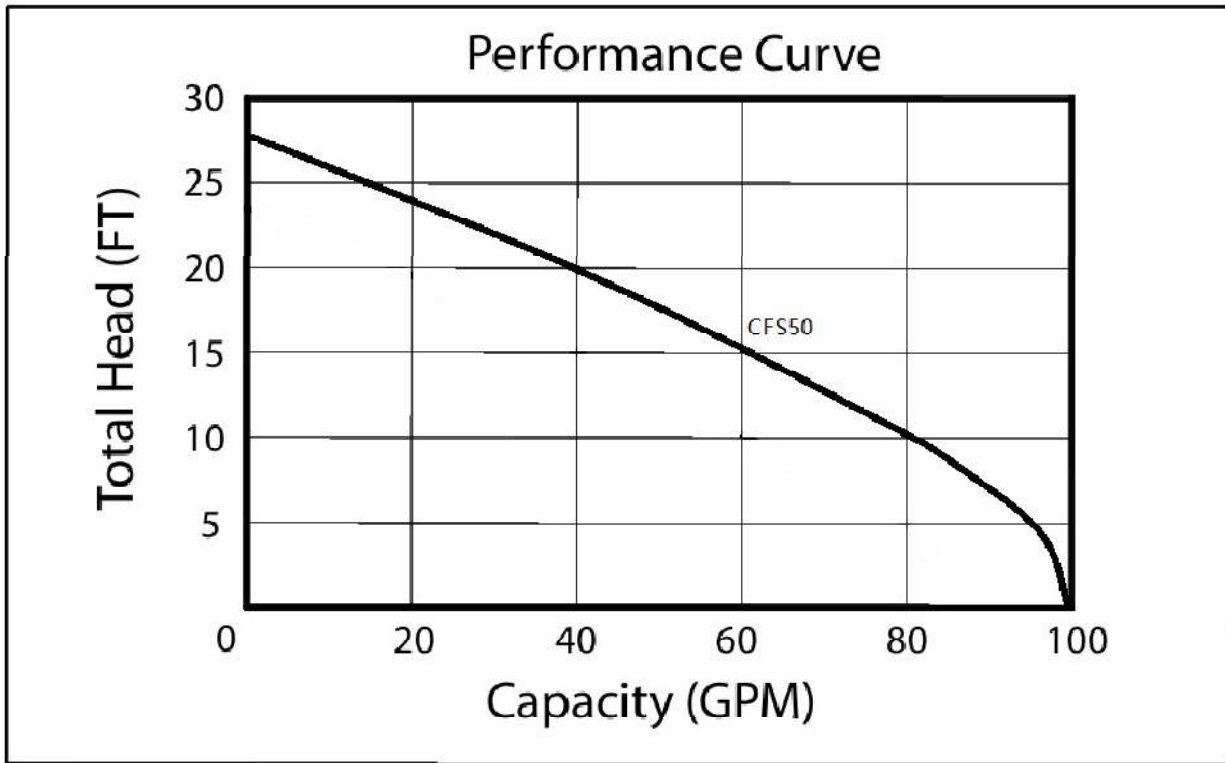
- 2" Solids-Handling
- Heavy-Duty Mechanical Seal
- Recessed, Clog-Free Impeller
- Durable, All Cast Iron Construction
- Dependable Operation
- Automatic and Manual Models

ELETRICAL DATA:

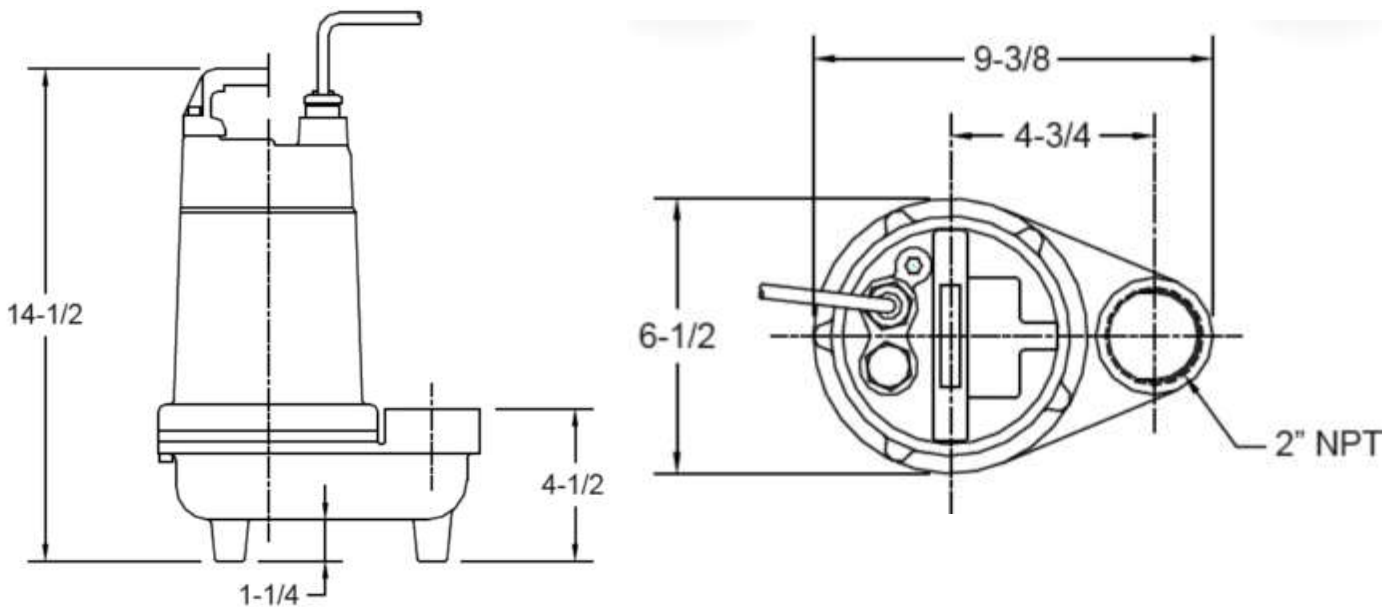
| MODEL | HP | Volt. | Ph/Hz | RPM | Full Load Amps | Locked Rotor Amps | Switch Type | Cord Size | Weight (lbs) |
|--------|-----|-------|-------|------|----------------|-------------------|-------------|-----------|--------------|
| CFS50M | 1/2 | 115 | 1/60 | 3450 | 10.5 | 20 | Manual | 16/3 | 38 |
| CFS50A | 1/2 | 115 | 1/60 | 3450 | 10.5 | 20 | Automatic | 16/3 | 39 |

CFS50 1/2HP Sump Pumps

PERFORMANCE CURVE



PUMP SIZE



50WQ-2P 2" Sewag Pumps

SPECIFICATIONS:



- DISCHARGE** 2" NPT,Vertical
- LIQUID TEMPERATURE..** 104°F(40°C) Continuous
- VOLUTE** Cast Iron ASTM A-48,Class 30
- MOTOR HOUSING** Cast Iron ASTM A-48,Class 30
- SEAL PLATE** Cast Iron ASTM A-48,Class 30
- IMPELLER** Cast Iron ASTM A-48,Class 30
10 Vane, Vortex design
Dynamically Balanced,ISO G6.3
- SHAFT** 420 Stainless Steel
- O RING** Buna-N
- SEAL: Design** Dual Mechanical Seals
 - Motor Side*..... Rotating Face - Carbon
Stationary Face - Ceramic
 - Pump Side*..... Rotating Face - Silicon Carbide
Stationary Face - Silicon Carbide
Elastomer - Buna -N
Hardware - 300 Series Stainless
- CABLE ENTRY** 20 Ft Cord With Pressure Grommet
for Sealing, UL listed SJTOW
- UPPER BEARING** Single Row, Ball
- LOWER BEARING** Single Row, Ball
- MOTOR** Single Phase, 3450 RPM, 115V, 60 Hz
Includes Overload Protection in the
motor, Oil Filled,Class B
Capacitor Start / Capacitor Run
- OPTIONAL EQUIPMENT:** Cord Length & Float Switch

Solids Handling: 1.5"

**Model: 50WQ0.37-2P
50WQ0.55-2P
50WQ0.75-2P**

KEY FEATURES:

- 1.5" Solids-Handling
- Stainless Steel "Keyed" Shaft
- Flows to 160 GPM
- Heads to 33 Feet
- 1/2 HP - 1 HP, 3450 RPM
- 2" NPT Discharge
- Optional Piggyback Float Switch

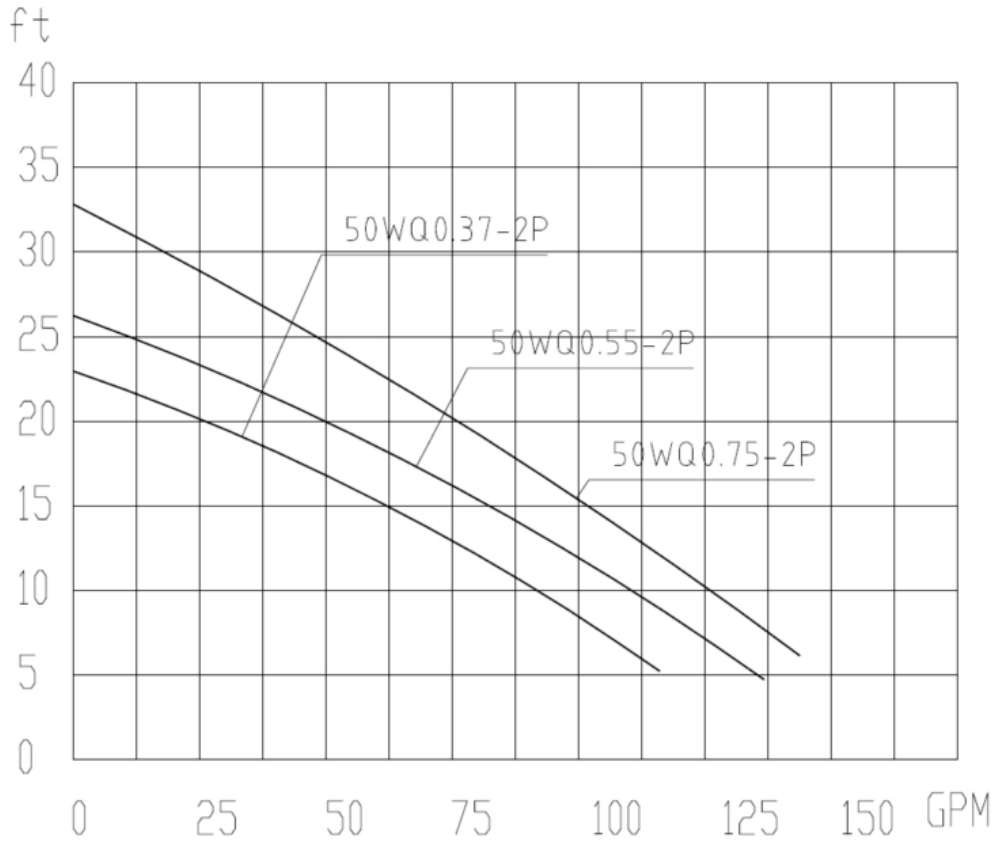


ELECTRICAL DATA:

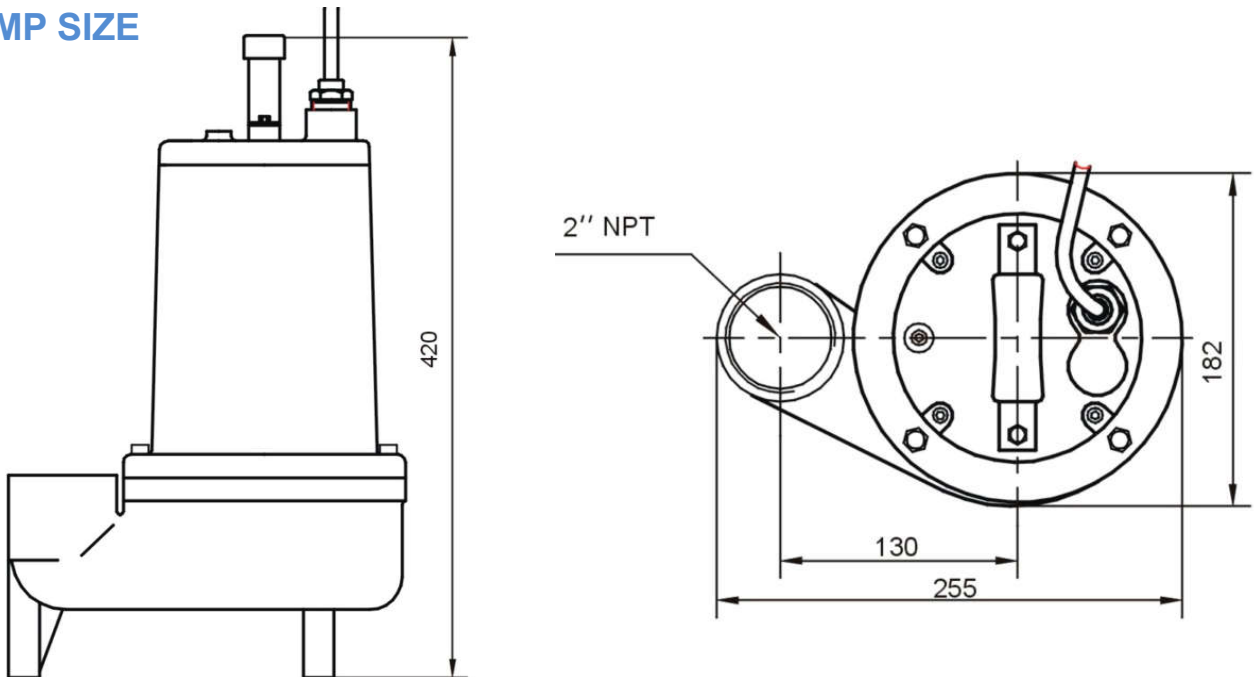
| MODEL | HP | VOLT | Ph/Hz | RPM | FULL LOAD AMPS | LOCKED ROTOR AMPS | CORD SIZE | CORD TYPE | WEIGHT (LBS) |
|-------------|-----|---------|-------|------|----------------|-------------------|-----------|-----------|--------------|
| 50WQ0.37-2P | 1/2 | 115/127 | 1/60 | 3450 | 10 | 37 | 14/3 | SJTOW | 57 |
| 50WQ0.55-2P | 3/4 | | | | 12 | 45 | | | 58 |
| 50WQ0.75-2P | 1 | | | | 15 | 45 | | | 59 |

50WQ-2P 2" Sewag Pumps

PERFORMANCE CURVE



PUMP SIZE



1/2HP CFW50 Sewage Pumps



SPECIFICATIONS:

- DISCHARGE** 2" NPT,Vertical
- LIQUID TEMPERATURE** .. 104°F(40°C) Continuous
- VOLUTE** Cast Iron ASTM A-48,Class 30
- MOTOR HOUSING** Cast Iron ASTM A-48,Class 30
- SEAL PLATE** Cast Iron ASTM A-48,Class 30
- IMPELLER** Cast Iron ASTM A-48,Class 30
2 Vane open with pump out vanes on back side. Dynamically Balanced
- SHAFT** 420 Stainless Steel
- O RING** Buna-N
- SEAL** Single Seal, Carbon/Ceramic Elastomer - Buna -N
Hardware - 300 Series Stainless
- CABLE ENTRY** 20 Ft Cord w/Plug
UL &CUL 14AWG, Type SJTOW
- UPPER BEARING** Single Row, Ball, Oil lubricated
- LOWER BEARING** Single Row, Ball, Oil Lubricated
- MOTOR** Single Phase, 1750 RPM, 60 Hz
115V, 12A; 230V, 6A
Includes Overload Protection in the motor, Oil Filled,Class B
Capacitor Start / Capacitor Run
- SWITCH TYPE** Piggy-back Float Switch

KEY FEATURES:

- 2" Solids-Handling
- Heavy-Duty Mechanical Seal
- 2 Vane Open Impeller
- Durable, All Cast Iron Construction
- Dependable Operation
- Automatic and Manual Models



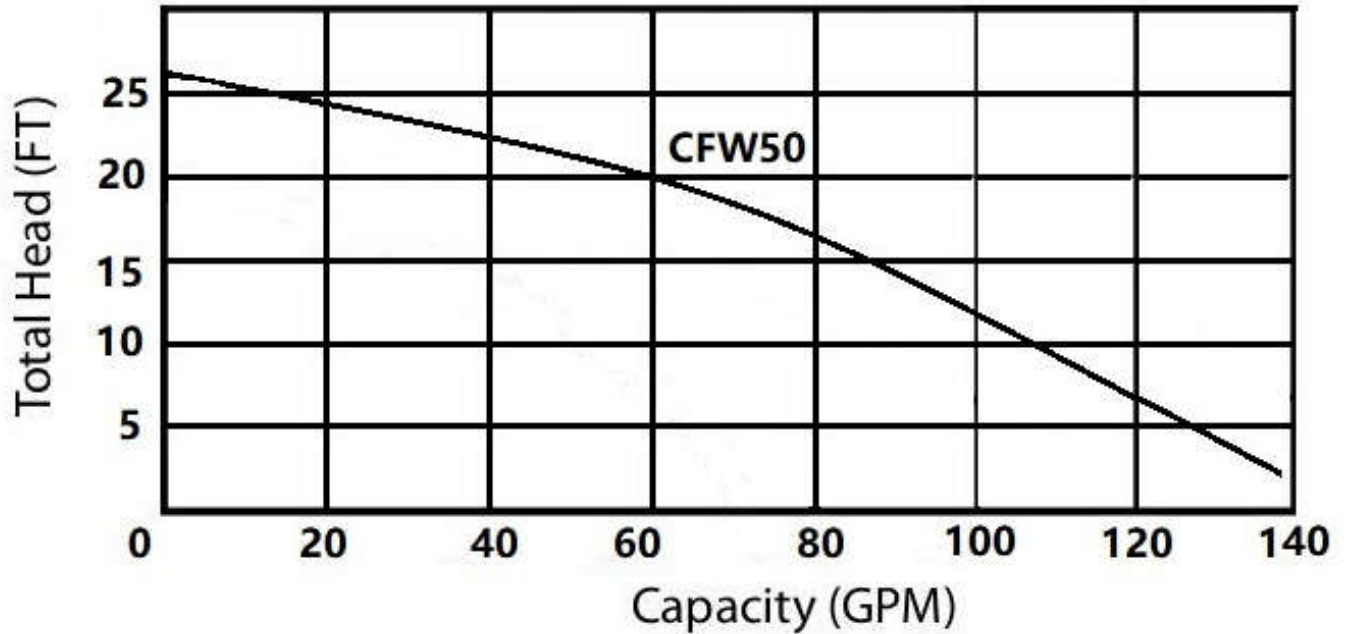
SOLID HANDLING: 2" (50.8MM)

ELETRICAL DATA:

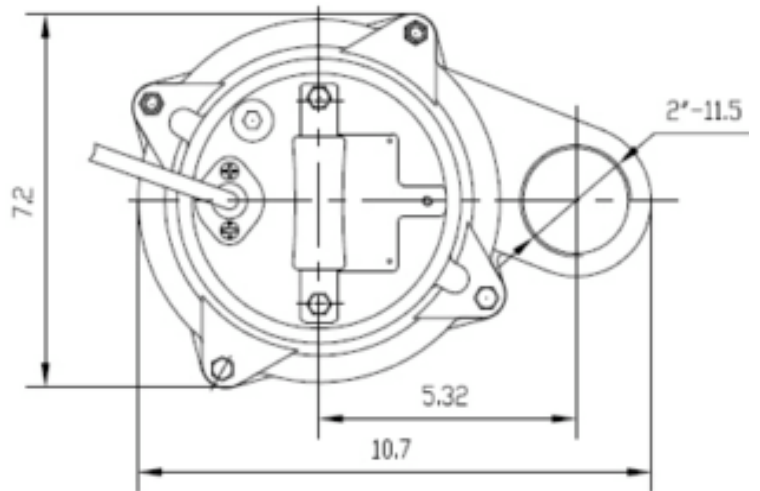
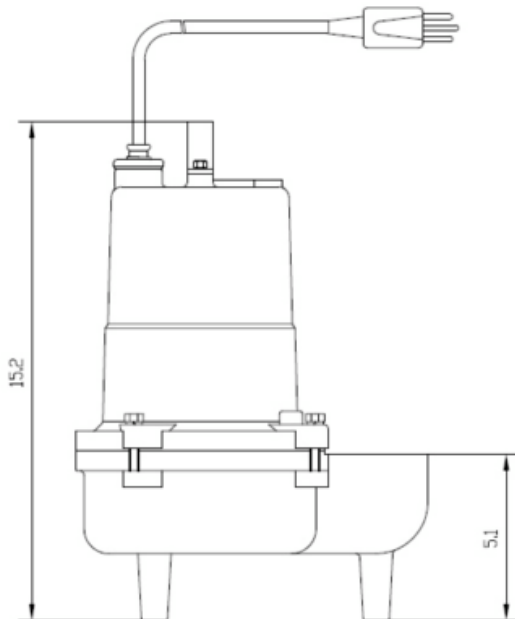
| MODEL | HP | Volt. | Ph/Hz | RPM | Amps | Switch Type | Discharge Size | Cord Length | Weight Lbs. |
|---------|-----|-------|-------|------|------|--------------------|----------------|-------------|-------------|
| CFW50M | 1/2 | 115 | 1/60 | 1750 | 12 | Manual | 2" | 20' | 49 |
| CFW50A | 1/2 | 115 | 1/60 | 1750 | 12 | Tethered Automatic | 2" | 20' | 50 |
| CFW502M | 1/2 | 230 | 1/60 | 1750 | 6 | Manual | 2" | 20' | 49 |
| CFW502A | 1/2 | 230 | 1/60 | 1750 | 6 | Tethered Automatic | 2" | 20' | 50 |

1/2HP CFW50 Sewage Pumps

PERFORMANCE CURVE



PUMP SIZE



1/2HP CFW50V Sewage Pumps



SPECIFICATIONS:

- DISCHARGE** 2" NPT,Vertical
- LIQUID TEMPERATURE** .. 104°F(40°C) Continuous
- VOLUTE** Cast Iron ASTM A-48,Class 30
- MOTOR HOUSING** Cast Iron ASTM A-48,Class 30
- SEAL PLATE** Cast Iron ASTM A-48,Class 30
- IMPELLER** Cast Iron ASTM A-48,Class 30
10 Vane, Vortex impeller
Dynamically Balanced
- SHAFT** 420 Stainless Steel
- O RING** Buna-N
- SEAL** Single Seal, Carbon/Ceramic
Elastomer - Buna -N
Hardware - 300 Series Stainless
- CABLE ENTRY** 20 Ft Cord w/Plug
UL &CUL 14AWG, Type SJTOW
- UPPER BEARING** Single Row, Ball, Oil lubricated
- LOWER BEARING** Single Row, Ball, Oil Lubricated
- MOTOR** Single Phase, 1750 RPM, 60 Hz
115V, 12A; 230V, 5.5A
Includes Overload Protection in
the motor, Oil Filled,Class B
Capacitor Start / Capacitor Run
- SWITCH TYPE** Piggy-back Float Switch

KEY FEATURES:

- 2" Solids-Handling
- Heavy-Duty Mechanical Seal
- Clog-Free Vortex Impeller
- Durable, All Cast Iron Construction
- Dependable Operation
- Automatic and Manual Models



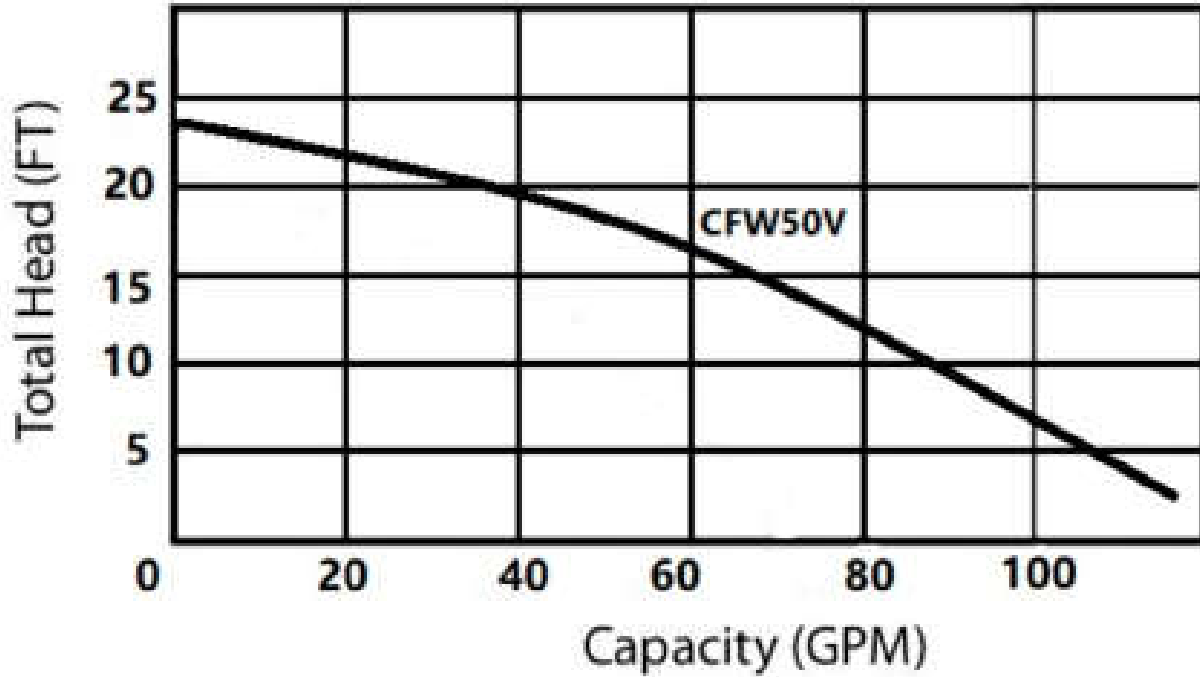
SOLID HANDLING: 2" (50.8MM) VOTEX IMPELLER

ELETRICAL DATA:

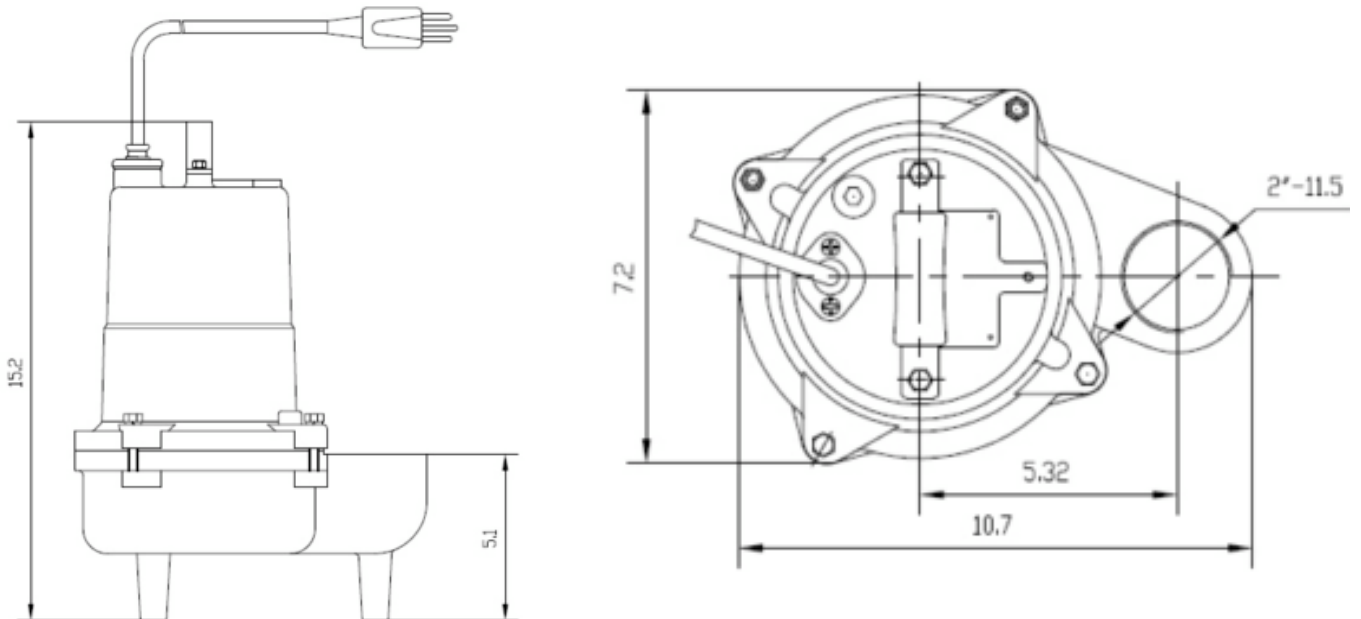
| MODEL | HP | Volt. | Ph/Hz | RPM | Amps | Switch Type | Discharge Size | Cord Length | Weight Lbs. |
|----------|-----|-------|-------|------|------|--------------------|----------------|-------------|-------------|
| CFW50VM | 1/2 | 115 | 1/60 | 1750 | 12 | Manual | 2" | 20' | 49 |
| CFW50VA | 1/2 | 115 | 1/60 | 1750 | 12 | Tethered Automatic | 2" | 20' | 50 |
| CFW502VM | 1/2 | 230 | 1/60 | 1750 | 5.5 | Manual | 2" | 20' | 49 |
| CFW502VA | 1/2 | 230 | 1/60 | 1750 | 5.5 | Tethered Automatic | 2" | 20' | 50 |

1/2HP CFW50V Sewage Pumps

PERFORMANCE CURVE



PUMP SIZE



80WQ-4P 3" Discharge Sewage Pumps



SPECIFICATIONS:

- DISCHARGE** 3" NPT,Vertical
- LIQUID TEMPERATURE** 104°F(40°C) Continuous
- VOLUTE** Cast Iron ASTM A-48,Class 30
- MOTOR HOUSING** Cast Iron ASTM A-48,Class 30
- SEAL PLATE** Cast Iron ASTM A-48,Class 30
- IMPELLER** Cast Iron ASTM A-48,Class 30
2 Vane, open,Dynamically Balanced
- SHAFT** 420 Stainless Steel
- O RING** Buna-N
- SEAL** *Design* Single Mechanical
Material Rotating Face - Silicon Carbide
Stationary Face - Silicon Carbide
Elastomer - Buna -N
Hardware - 300 Series Stainless
- CABLE ENTRY** 30 Ft Cord, UL listed SOOW
- UPPER BEARING** Single Row, Ball, Oil lubricated
- LOWER BEARING** Single Row, Ball, Oil Lubricated
- MOTOR: Single Phase** ...1750 RPM, 115V or 230V, 60 Hz
Capacitor Start / Capacitor Run
- Three Phase** ... 1750 RPM, 230/460V, 60Hz
Includes Overload Protection in the Motor
Oil Filled,Class B

OPTIONAL EQUIPMENT: Cord Length & Float Switch

Solids Handling: 2"

Models:

- 80WQ0.37-4P, 115V or 230V**
- 80WQ0.55-4P, 115V or 230V**
- 80WQ0.75-4P, 115V or 230V**
- 80WQ1.1-4P, 115V or 230V**
- 80WQ1.5-4P, 230V**
- 80WQ1.5-4P, 230/460V,3 Phase**

KEY FEATURES:

- 2" Solids-Handling
- Stainless Steel "Keyed" Shaft
- Flows to 350 GPM
- Heads to 38 Feet
- 1/2 HP - 2 HP, 1750 RPM
- 3" NPT Discharge
- Optional Piggyback Float Switch

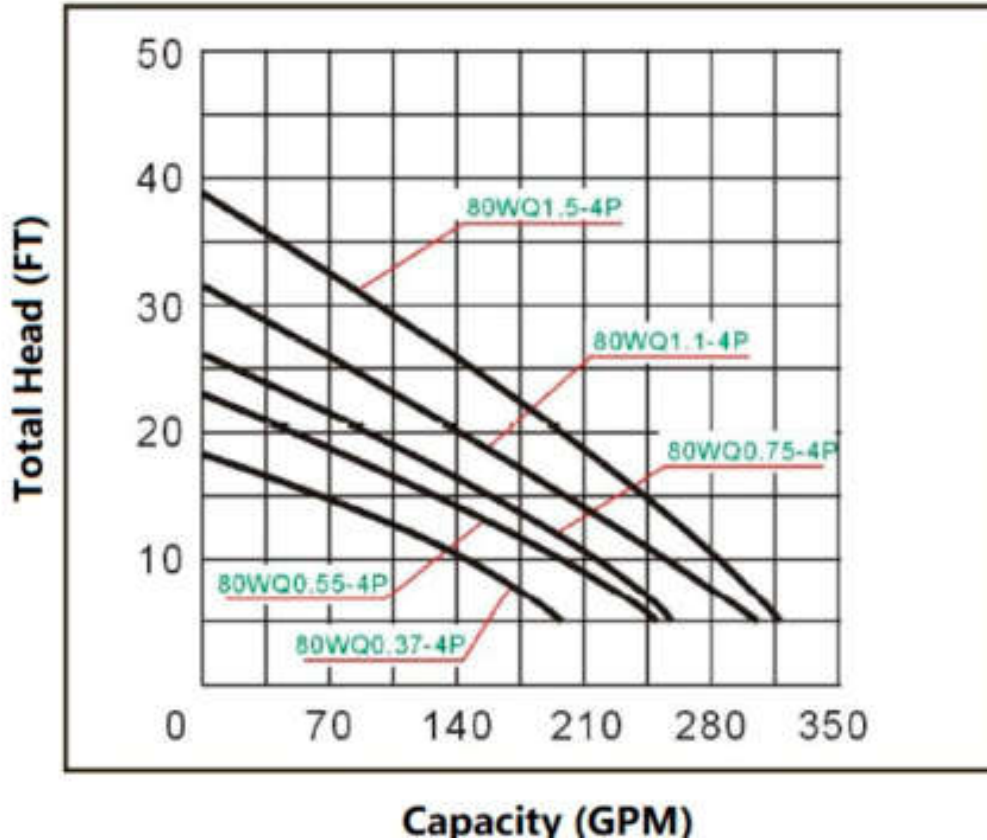


ELECTRICAL DATA:

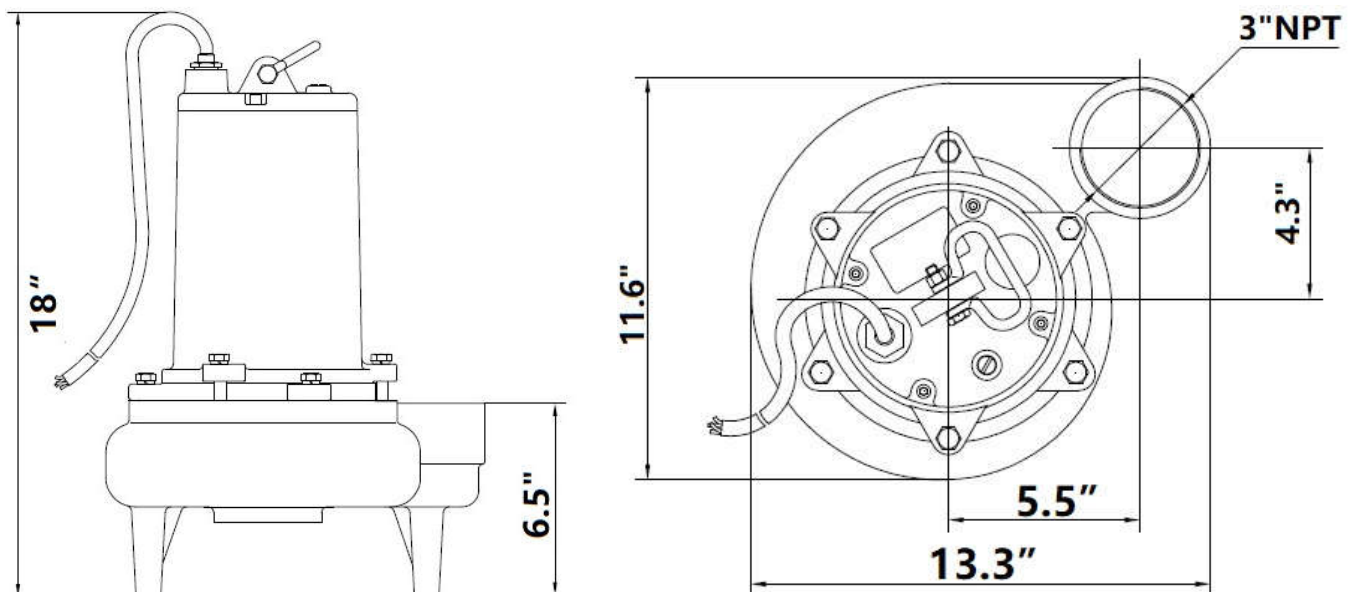
| MODEL | HP | Volt. | Ph/Hz | RPM | Full Load Amps | Locked Rotor Amps | Cord Type | Cord Size | Weight(lb) |
|-------------|-------|---------|-------|------|----------------|-------------------|-----------|-----------|------------|
| 80WQ0.37-4P | 1/2 | 115/230 | 1/60 | 1750 | 8/4 | 30/15 | SOOW | 14/3 | 80 |
| 80WQ0.55-4P | 3/4 | 115/230 | 1/60 | 1750 | 11/5.5 | 41/20.5 | SOOW | 14/3 | 82 |
| 80WQ0.75-4P | 1 | 115/230 | 1/60 | 1750 | 13/6.5 | 48/24 | SOOW | 14/3 | 84 |
| 80WQ1.1-4P | 1-1/2 | 115/230 | 1/60 | 1750 | 16/8 | 52/26 | SOOW | 14/3 | 86 |
| 80WQ1.5-4P | 2 | 230 | 1/60 | 1750 | 9 | 27 | SOOW | 14/3 | 88 |
| 80WQ1.5-4P | 2 | 230/460 | 3/60 | 1750 | 6.5/3.2 | 32.5/16 | SOOW | 14/4 | 88 |

80WQ-4P 3" Discharge Sewage Pumps

PERFORMANCE CURVE



PUMP SIZE



80WQ2.2-4P 3HP Sewage Pumps

SPECIFICATIONS:

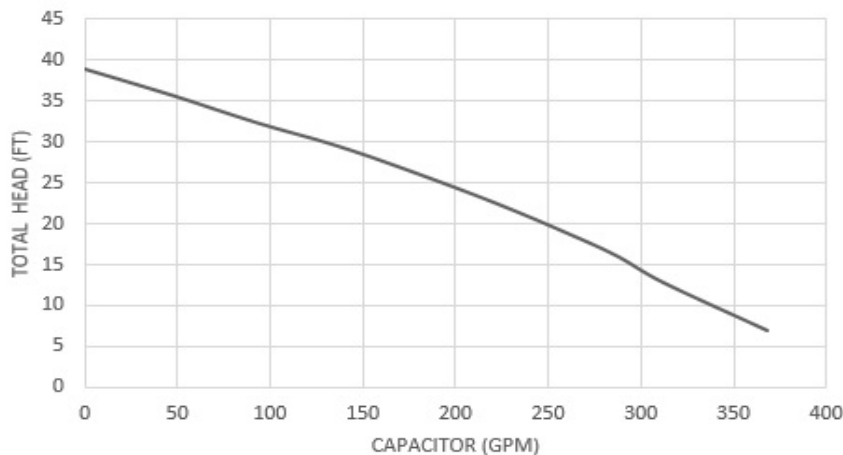


- DISCHARGE** 3" NPT,Vertical
- LIQUID TEMPERATURE** 104°F(40°C) Continuous
- VOLUTE** Cast Iron ASTM A-48,Class 30
- MOTOR HOUSING** Cast Iron ASTM A-48,Class 30
- SEAL PLATE** Cast Iron ASTM A-48,Class 30
- IMPELLER** Cast Iron ASTM A-48,Class 30
2 Vane, open,Dynamically Balanced
- SHAFT** 420 Stainless Steel
- O RING** Buna-N
- SEAL: Design** Dual Mechanical Seals
 - Motor Side*..... Rotating Face - Carbon
Stationary Face - Ceramic
 - Pump Side*..... Rotating Face - Silicon Carbide
Stationary Face - Silicon Carbide
Elastomer - Buna -N
Hardware - 300 Series Stainless
- CABLE ENTRY** 30 Ft Cord, UL listed SOOW
- UPPER BEARING** Single Row, Ball, Oil lubricated
- LOWER BEARING** Single Row, Ball, Oil Lubricated
- MOTOR** Three Phase, 1750 RPM, 230/460V, 60Hz
Includes Overload Protection in the Motor
Oil Filled,Class B

OPTIONAL EQUIPMENT: Cord Length



Solids Handling: 2"
Model: 80WQ2.2-4P, 230/460V,3 Phase



KEY FEATURES:

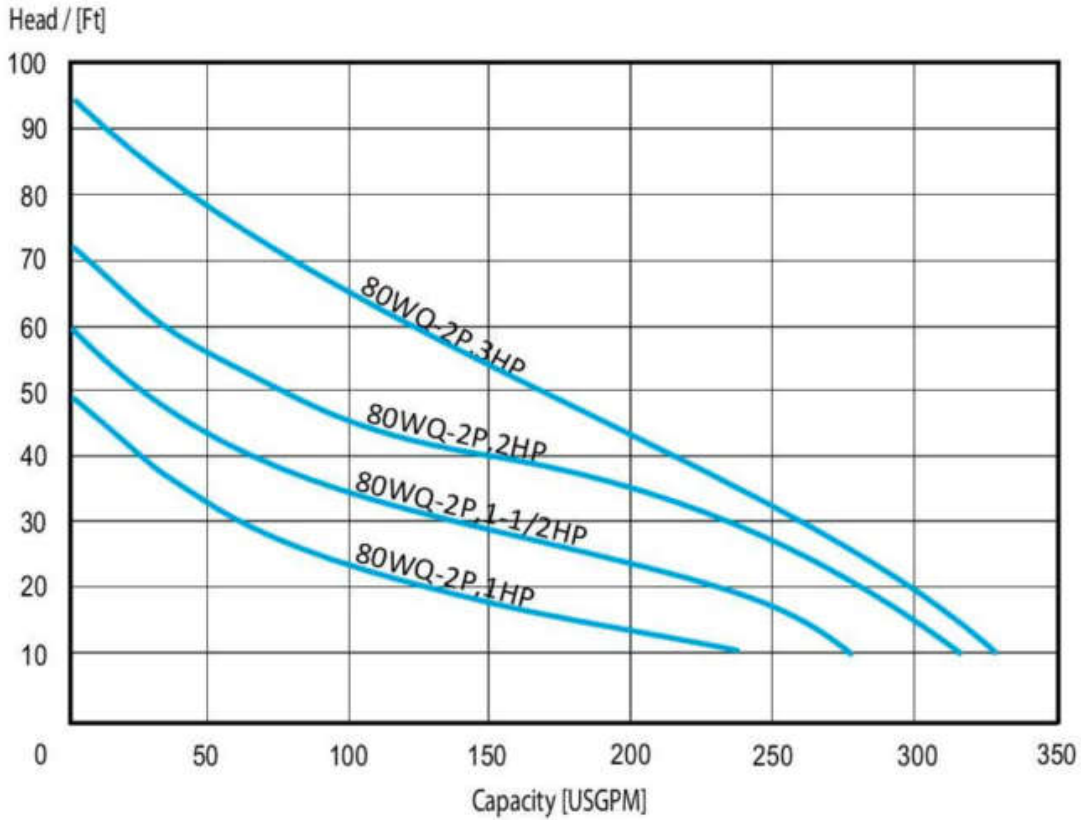
- 2" Solids-Handling
- Stainless Steel "Keyed" Shaft
- Flows to 390 GPM
- Heads to 39 Feet
- 3HP, 1750 RPM
- 3" NPT Discharge

Pump Size: 19" X 14.5" X 11.8"

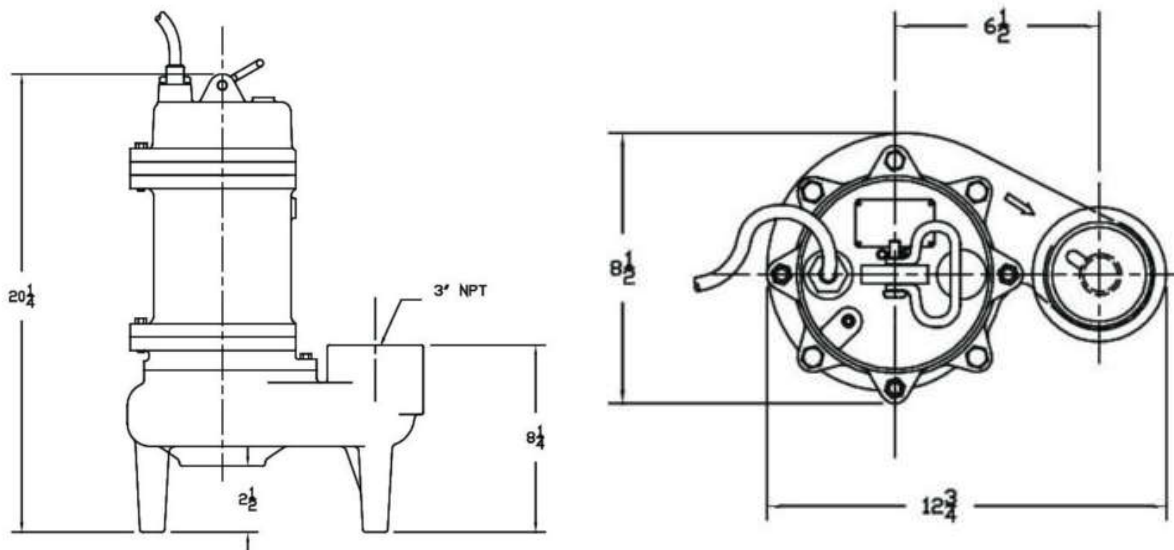
| MODEL | HP | Volt. | Ph/Hz | RPM | Full Load Amps | Locked Rotor Amps | Cord Type | Cord Size | Weight (Lbs) |
|------------|----|---------|-------|------|----------------|-------------------|-----------|-----------|--------------|
| 80WQ2.2-4P | 3 | 230/460 | 3/60 | 1750 | 7.1/3.5 | 36/17.5 | SOOW | 14/4 | 92 |

80WQ-2P 3" Single-Vane Sewage Pumps

PERFORMANCE CURVE



PUMP SIZE



100WQ-4P 4" Discharge Sewage Pumps



SPECIFICATIONS:

- DISCHARGE** 4" 125lb., ANSI Flange, Horizontal
- LIQUID TEMPERATURE** 104°F(40°C) Continuous
- VOLUTE** Cast Iron ASTM A-48, Class 30
- MOTOR HOUSING** Cast Iron ASTM A-48, Class 30
- SEAL PLATE** Cast Iron ASTM A-48, Class 30
- IMPELLER** Cast Iron ASTM A-48, Class 30
2 Vane, open, Dynamically Balanced
- SHAFT** 420 Stainless Steel
- O RING** Buna-N
- SEAL: Design** Dual Mechanical Seals
 - Motor Side*..... Rotating Face - Carbon
Stationary Face - Ceramic
 - Pump Side*..... Rotating Face - Silicon Carbide
Stationary Face - Silicon Carbide
Elastomer - Buna -N
Hardware - 300 Series Stainless
- POWER CORD** 30 Ft Cord, UL listed SOW
- SENSOR CORD** 30 Ft Cord, 18/5, 0.476" O.D SOW
- UPPER BEARING** Single Row, Ball, Oil lubricated
- LOWER BEARING** Single Row, Ball, Oil Lubricated
- MOTOR:** 1750 RPM, three phase, 230/460V, 60Hz
Includes Overload Protection in the motor, Oil Filled, Class B
- OPTIONAL EQUIPMENT:** Cord Length

Solids Handling: 3" Dia

Model:

- 100WQ2.2-4P, 230/460V**
- 100WQ3.7-4P, 230/460V**

KEY FEATURES:

- 3" Solids-Handling
- Stainless Steel "Keyed" Shaft
- Flows to 520 GPM
- Heads to 51 Feet
- 3HP & 5 HP, 230/460V Dual Voltage
- 4" 125lb ANSI Flange, Horizontal

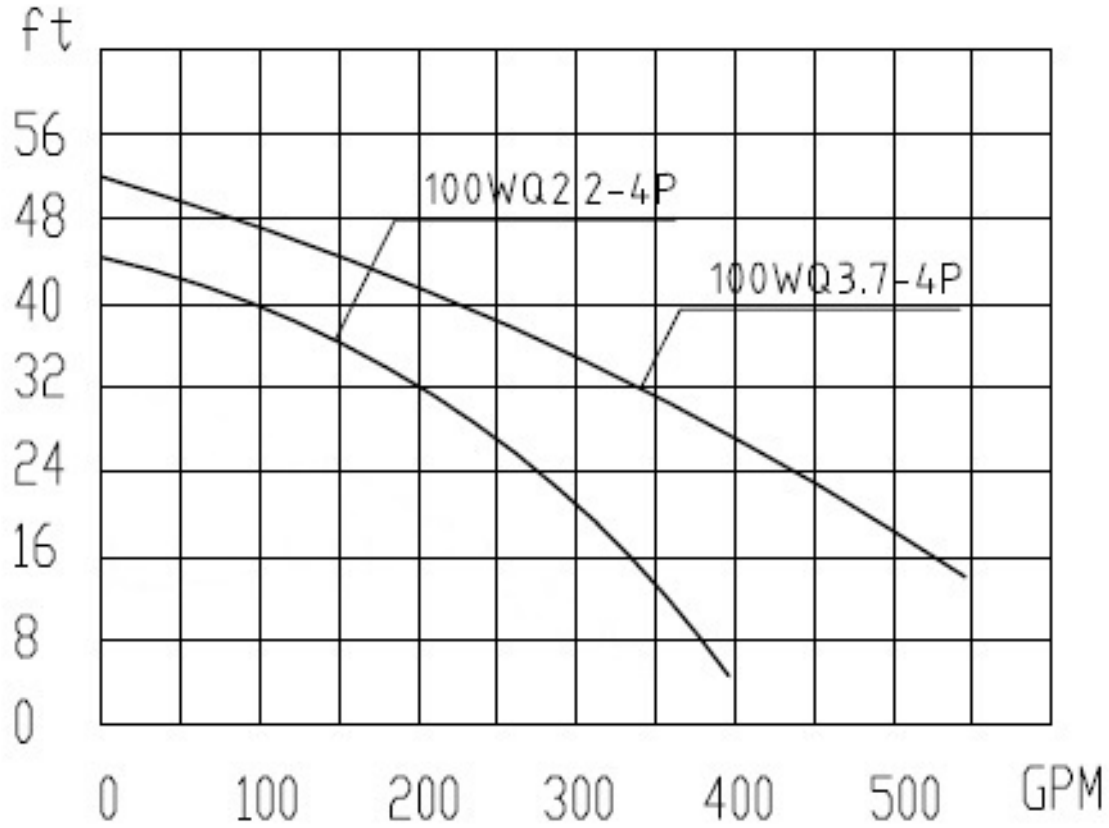


ELECTRICAL DATA:

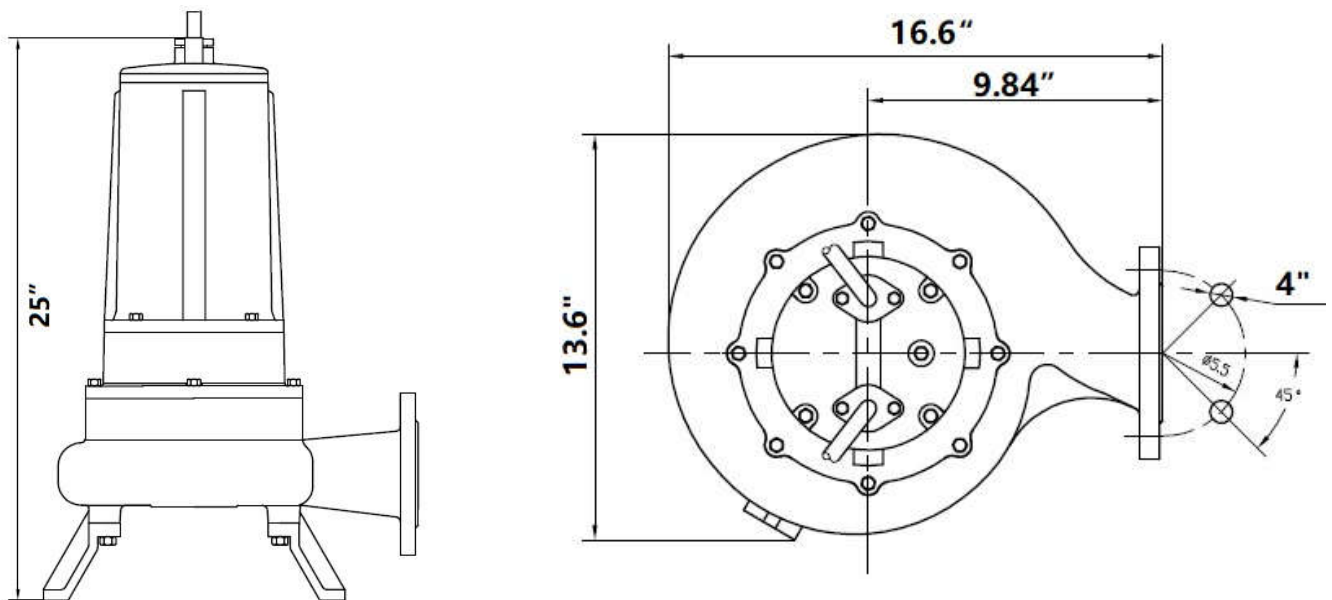
| MODEL | HP | Volt. | Ph/Hz | RPM | Full Load Amps | Locked Rotor Amps | Cord Type | Cord Size | Weight (lbs) |
|-------------|----|--------------|-------|------|----------------|-------------------|-----------|-----------|--------------|
| 100WQ2.2-4P | 3 | 208~230/460V | 3/60 | 1750 | 9.6/4.8 | 48/24 | SOW | 14/4 | 220 |
| 100WQ3.7-4P | 5 | 208~230/460V | 3/60 | 1750 | 13/6.5 | 65/32.5 | SOW | 14/4 | 250 |

100WQ-4P 4" Discharge Sewage Pumps

PERFORMANCE CURVE

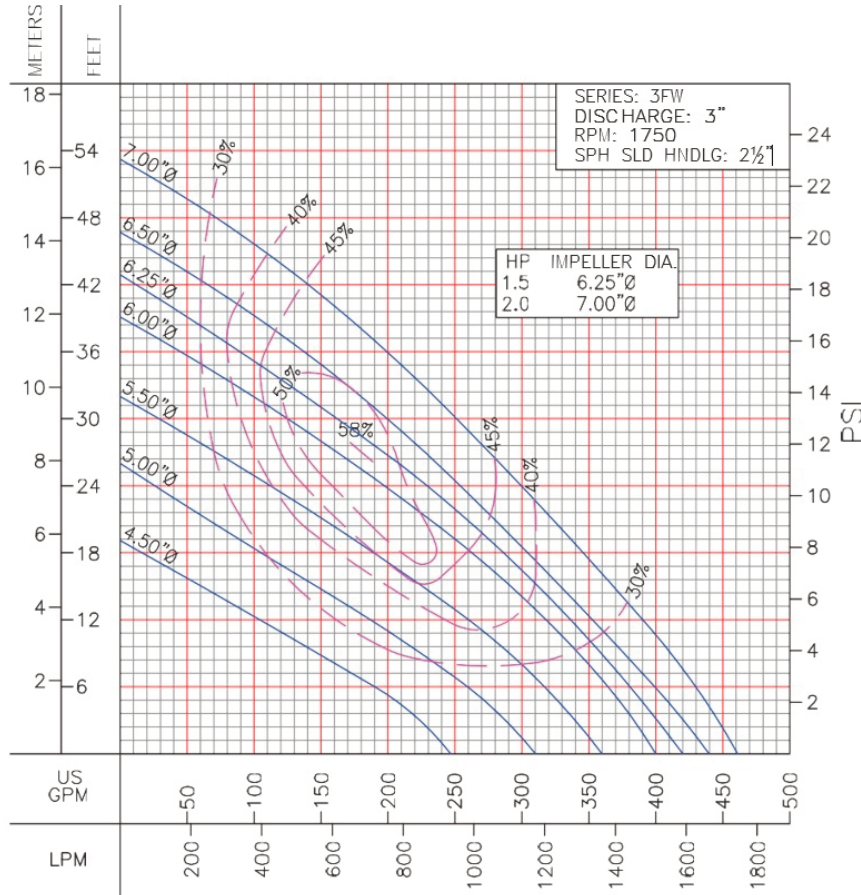


PUMP SIZE

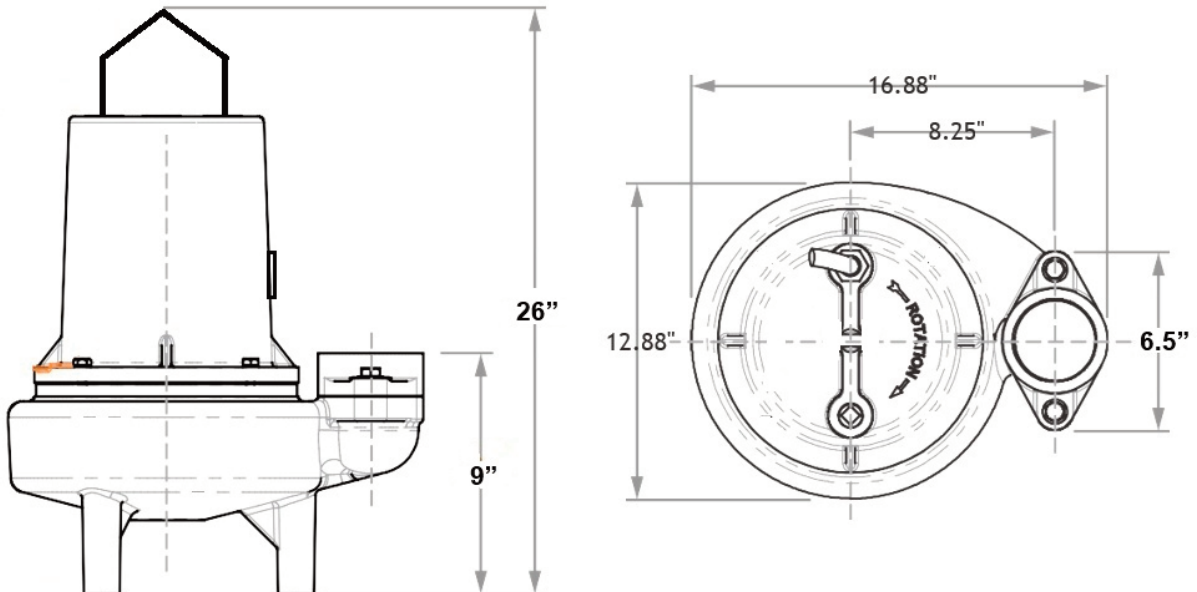


3FW 1.5-2HP Submersible Solids Handling Pumps

PERFORMANCE CURVE

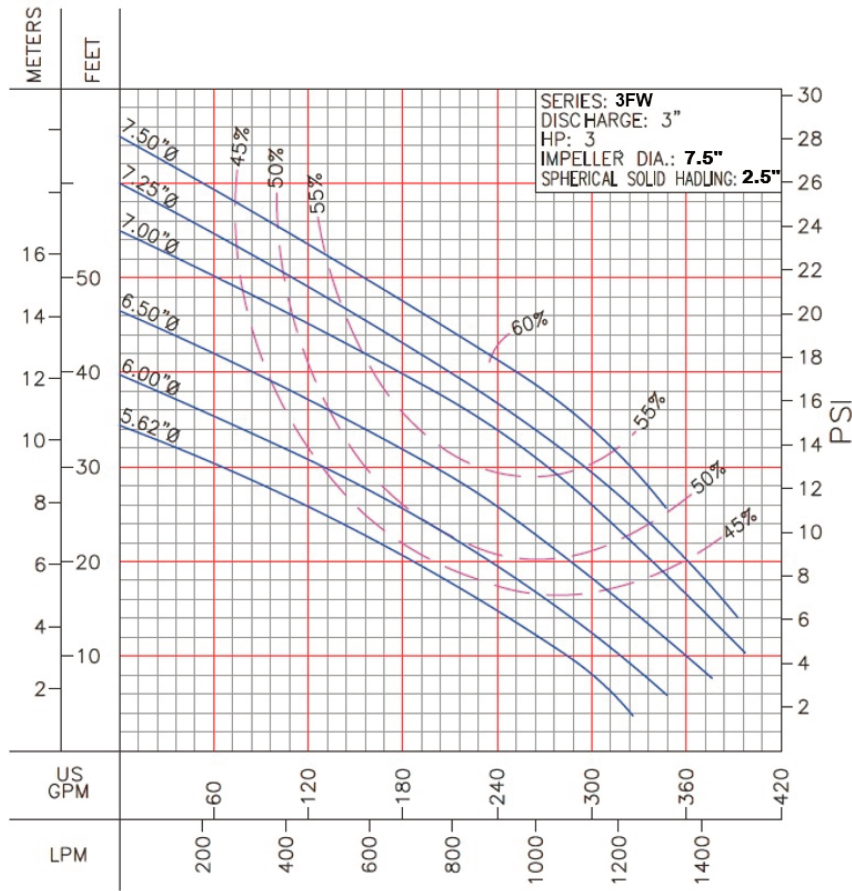


PUMP SIZE

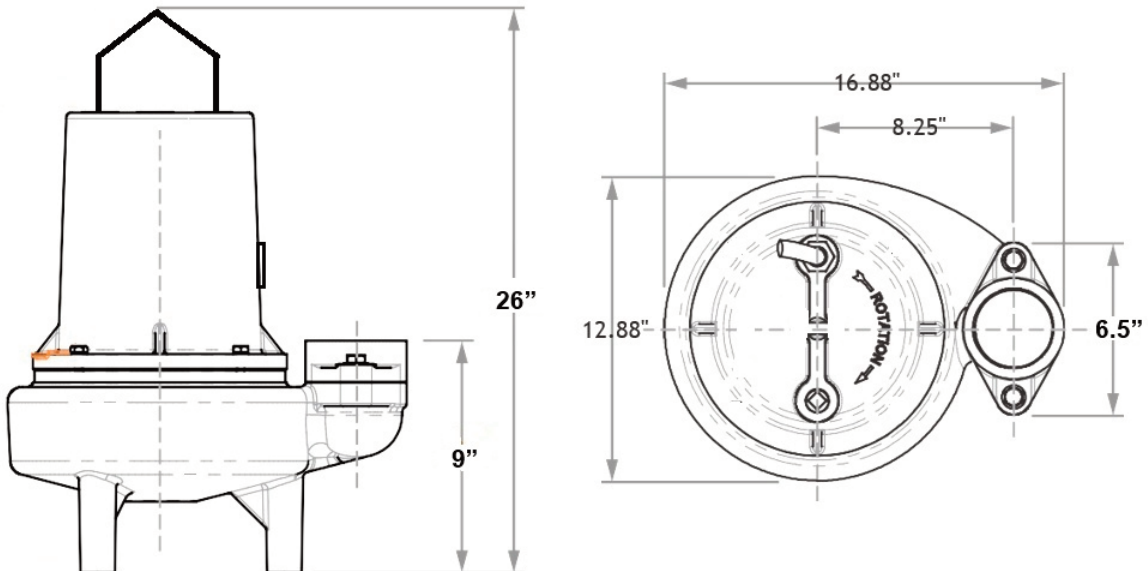


3FW 3HP Submersible Solids Handling Pumps

PERFORMANCE CURVE



PUMP SIZE



3-7.5HP NON-CLOG SUBMERSIBLE SEWAGE PUMPS



SPECIFICATIONS:

DISCHARGE 4" 150lb., ANSI Flange, Horizontal
LIQUID TEMPERATURE 104°F(40°C) Continuous
VOLUTE Cast Iron ASTM A-48, Class 30
MOTOR HOUSING Cast Iron ASTM A-48, Class 30
SEAL PLATE Cast Iron ASTM A-48, Class 30
IMPELLER Enclosed 2 Vane impeller
SHAFT 420 Stainless Steel
O RING Buna-N
SEAL: Design Dual Mechanical Seals
 Motor Side..... Rotating Face - Carbon
 Stationary Face -Silicon Carbide
 Pump Side..... Rotating Face - Silicon Carbide
 Stationary Face - Tungsten Carbide
 Elastomer - Buna -N
 Hardware - 300 Series Stainless
POWER CORD 40ft Cord, SOOW, Epoxy sealed
SENSOR CORD 40 Ft Cord, 18/5, SOOW
UPPER BEARING Single Row, Ball, Oil lubricated
LOWER BEARING Double Row, Ball, Oil Lubricated
MOTOR: Single Phase ... 1750 RPM, 230V, 60 Hz
 Capacitor Start / Capacitor Run
 Three Phase ... 1750 RPM, three phase, 230/460V, 60Hz
 air-filled, squirrel cage induction.
 Insulation Class: H

OPTIONAL EQUIPMENT: Cord Length

Solids Handling: 3" Dia.

Model:

Single Phase: F4V3-41, F4V5-41

Three Phase: F4V3-43

F4V5-43

F4V7.5-43

- 3" Solids-Handling
- Stainless Steel "Keyed" Shaft
- Flows to 660 GPM
- Heads to 65 Feet
- 208 / 230 / 460 volt, 1 or 3 phase
- 4" 150lb ANSI Flange, Horizontal
- Ideal for higher flows, lower heads

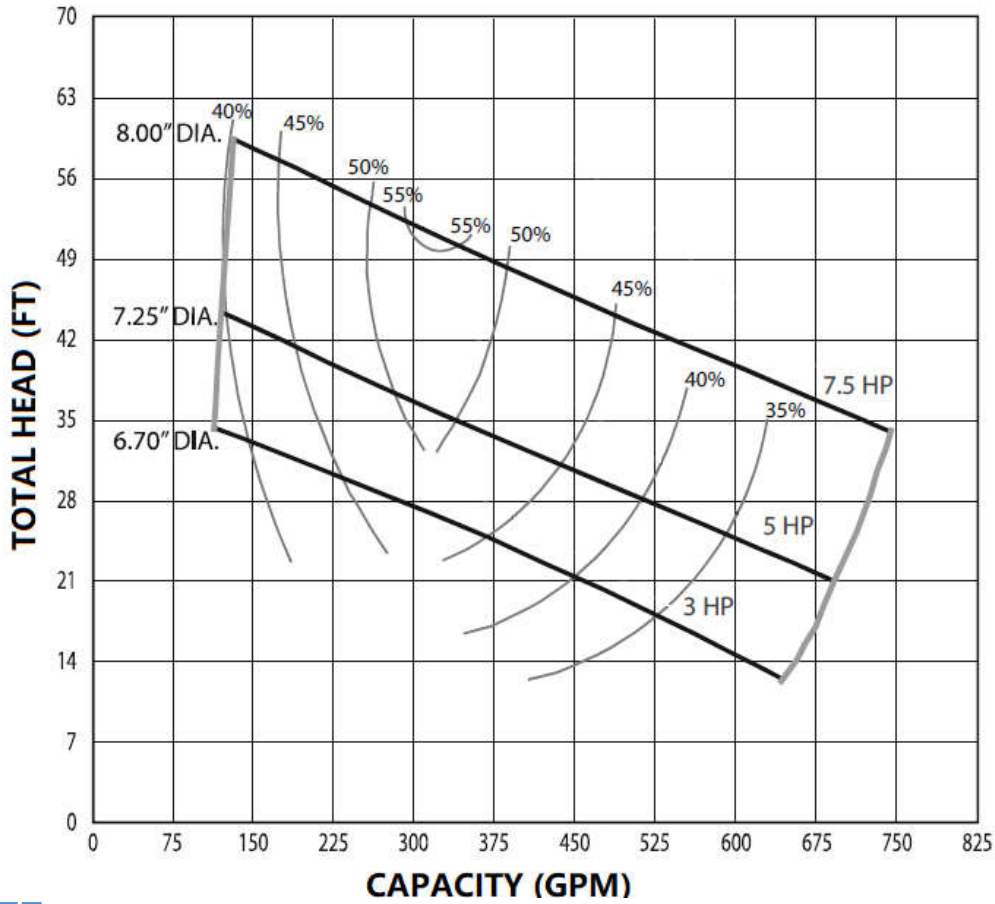


ELETRICAL DATA:

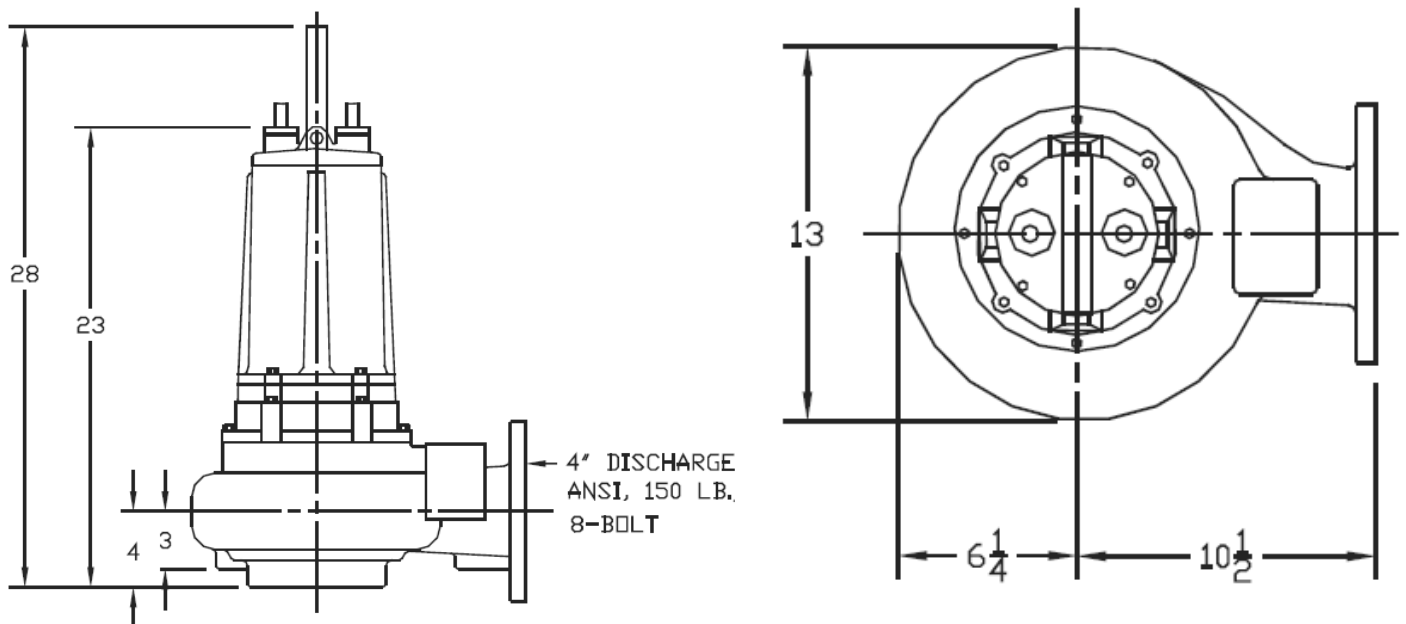
| MODEL | HP | Volt. | Ph/Hz | RPM | Amps | Cord Size | Impeller Size | Weight (lbs) |
|-----------|-----|----------|-------|------|--------|-----------|---------------|--------------|
| F4V3-41 | 3 | 208~230V | 1/60 | 1750 | 17 | 12AWG/4C | 6.70" | 205 |
| F4V5-41 | 5 | 208~230V | 1/60 | 1750 | 33 | 10AWG/4C | 7.25" | 255 |
| F4V3-43 | 3 | 230/460V | 3/60 | 1750 | 14/7 | 12AWG/4C | 6.70" | 200 |
| F4V5-43 | 5 | 230/460V | 3/60 | 1750 | 19/9.5 | 10AWG/4C | 7.25" | 250 |
| F4V7.5-43 | 7.5 | 230/460V | 3/60 | 1750 | 30/15 | 10AWG/4C | 8.00" | 300 |

3-7.5HP NON-CLOG SUBMERSIBLE SEWAGE PUMPS

PERFORMANCE CURVE



PUMP SIZE



7.5-25HP NON-CLOG SUBMERSIBLE SEWAGE PUMPS



SPECIFICATIONS:

- DISCHARGE** 4" 150lb., ANSI Flange, Horizontal
- LIQUID TEMPERATURE** 104°F(40°C) Continuous
- VOLUTE** Cast Iron ASTM A-48,Class 30
- MOTOR HOUSING** Cast Iron ASTM A-48,Class 30
- SEAL PLATE** Cast Iron ASTM A-48,Class 30
- IMPELLER** Enclosed 2 Vane impeller
- SHAFT** 420 Stainless Steel
- O RING** Buna-N
- SEAL: Design** Dual Mechanical Seals
 - Motor Side*..... Rotating Face - Carbon Stationary Face -Silicon Carbide
 - Pump Side*..... Rotating Face - Silicon Carbide
Stationary Face - Tungsten Carbide
- ELASTOMER** Elastomer - Buna -N, Hardware - 300 Series Stainless
- POWER CORD** 40 Ft Cord, SOOW, Epoxy sealed
- SENSOR CORD** 40 Ft Cord, 18AWG/5C, SOOW
- UPPER BEARING** Single Row, Ball, Oil lubricated
- LOWER BEARING** Double Row, Ball, Oil Lubricated
- MOTOR: Single Phase** ... 1750 RPM, 230V, 60 Hz,Capacitor Start / Capacitor Run
- Three Phase** ... 1750 RPM, three phase,230/460V, 60Hz
- INDUCTION** Air-filled, squirrel cage induction. Insulation Class: H
- MOTOR SPEED**..... 1150 / 1750 RPM
- OPTIONAL EQUIPMENT:** Cord Length

Solids Handling: 3" Dia.

Model:

4 POLE: F4V10-43, F4V15-43

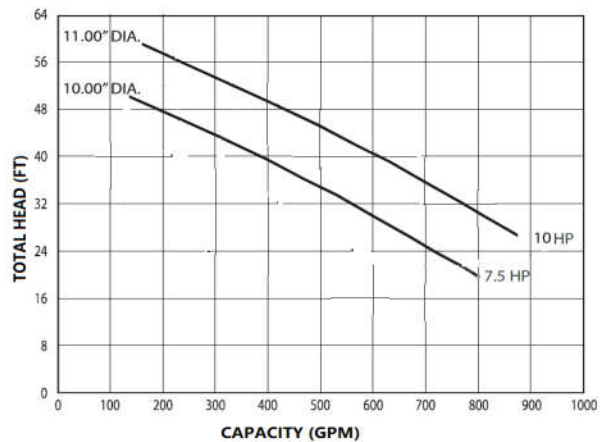
F4V20-43, F4V25-43

6 POLE: F4V7.5-63, F4V10-63

KEY FEATURES:

- 3" Solids-Handling
- Stainless Steel "Keyed" Shaft
- Flows to 1200 GPM
- Heads to 105 Feet
- 208 / 230 / 460 volt, 3 phase
- 4" 150lb ANSI Flange, Horizontal
- 1150/1750 RPM motor speed
- Ideal for higher heads

6 POLE PUMPS PERFORMANCE CURVE

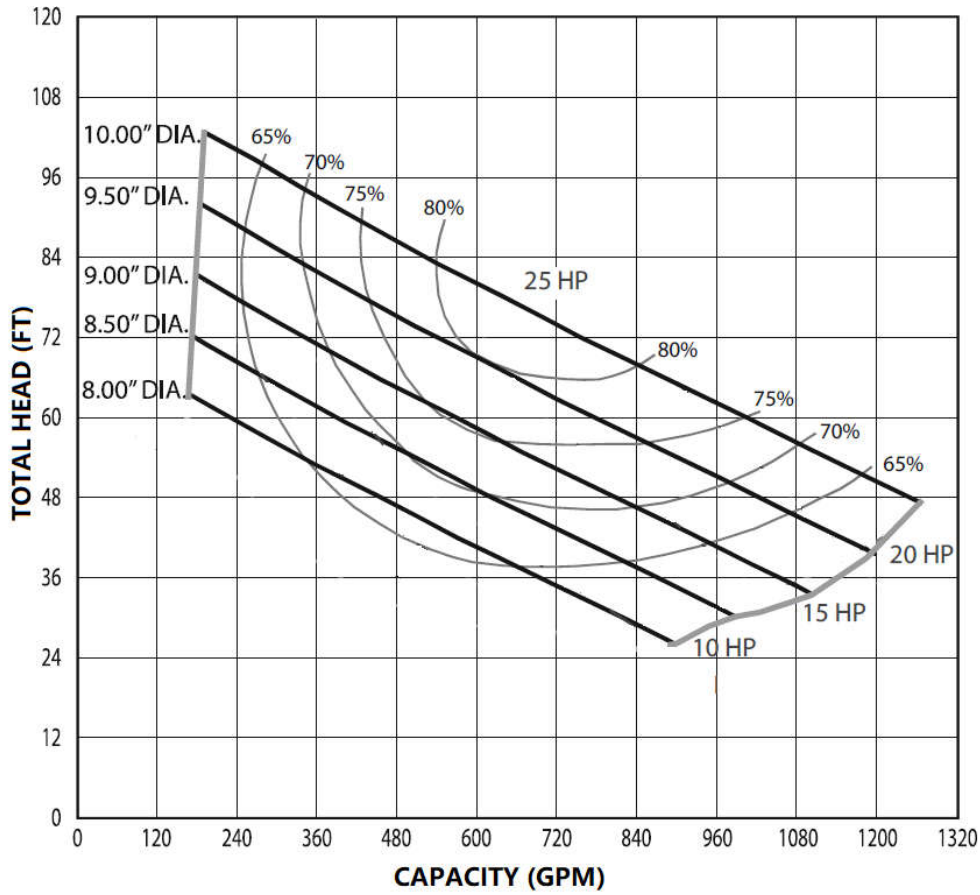


ELECTRICAL DATA:

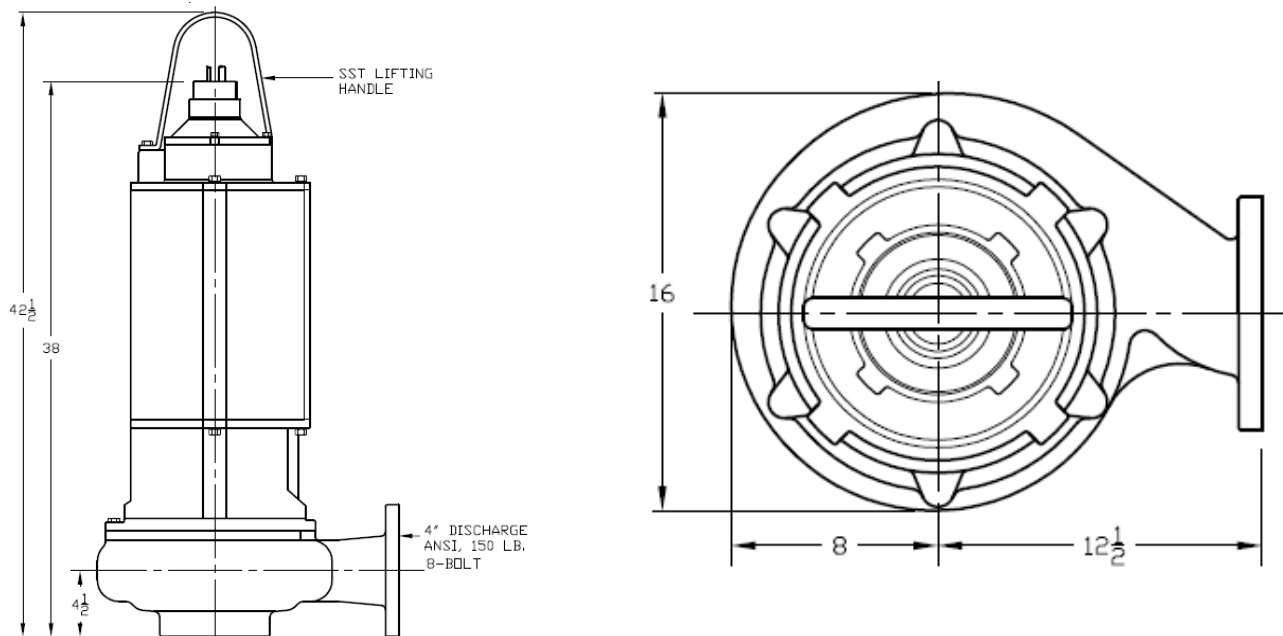
| MODEL | HP | Volt. | Ph/Hz | RPM | Amps | Cord Size | Impeller Size | Weight (lbs) |
|-----------|-----|----------|-------|------|---------|-----------|---------------|--------------|
| F4V10-43 | 10 | 230/460V | 3/60 | 1750 | 34/17 | 6AWG/4C | 8.00" | 580 |
| F4V15-43 | 15 | 230/460V | 3/60 | 1750 | 44/22 | 5AWG/4C | 9.00" | 610 |
| F4V20-43 | 20 | 230/460V | 3/60 | 1750 | 50/25 | 5AWG/4C | 9.50" | 650 |
| F4V25-43 | 25 | 230/460V | 3/60 | 1750 | 64/32 | 5AWG/4C | 10.00" | 700 |
| F4V7.5-63 | 7.5 | 230/460V | 3/60 | 1150 | 24/12 | 6AWG/4C | 10.00" | 580 |
| F4V10-63 | 10 | 230/460V | 3/60 | 1150 | 29/14.5 | 6AWG/4C | 11.00" | 610 |

7.5-25HP NON-CLOG SUBMERSIBLE SEWAGE PUMPS

PERFORMANCE CURVE



PUMP SIZE



WQ-0.75QG 1HP Grinder Pumps



SPECIFICATIONS:

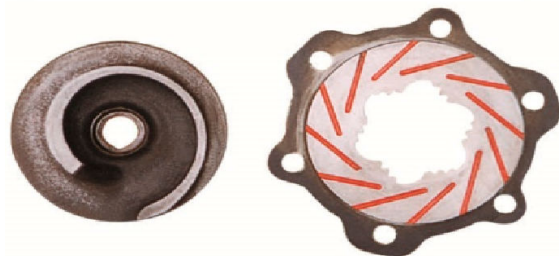
- DISCHARGE** 2" NPT, Vertical
 - LIQUID TEMPERATURE** .. Up to 170°F(76°C) Continuous
 - VOLUTE** Cast Iron ASTM A-48, Class 30
 - MOTOR HOUSING** Cast Iron ASTM A-48, Class 30
 - SEAL PLATE** Cast Iron ASTM A-48, Class 30
 - IMPELLER** Carbon Steel
 - SHAFT** 420 Stainless Steel
 - O RING** Buna-N
 - SEAL: Design** Dual Mechanical Seals
 - Motor Side*..... Rotating Face - Carbon
Stationary Face - Silicon Carbide
 - Pump Side*..... Rotating Face - Silicon Carbide
Stationary Face - Silicon Carbide
Elastomer - Buna -N
Hardware - 300 Series Stainless
 - CABLE ENTRY** 20 Ft strain relief power cord
 - UPPER BEARING** Single Row, Ball, Oil lubricated
 - LOWER BEARING** Single Row, Ball, Oil Lubricated
 - MOTOR** Includes Overload Protection in the Motor
Air Filled
 - Single Phase 3450 RPM, 60Hz, 115 or 230 V
Capacitor Start / Capacitor Run
 - Three Phase 3450RPM, 60Hz, 230 / 460V
- OPTIONAL EQUIPMENT:** Cord Length & Float Switch

APPLICATIONS:

Residential sewage / Commercial sewage
Retail space / High-temp effluent

Solids Handling: Up to 2" Dia.

Model: WQ-0.75QG1, 115V
WQ-0.75QG2, 230V
WQ-0.75QG3, 230/460V, 3PH.



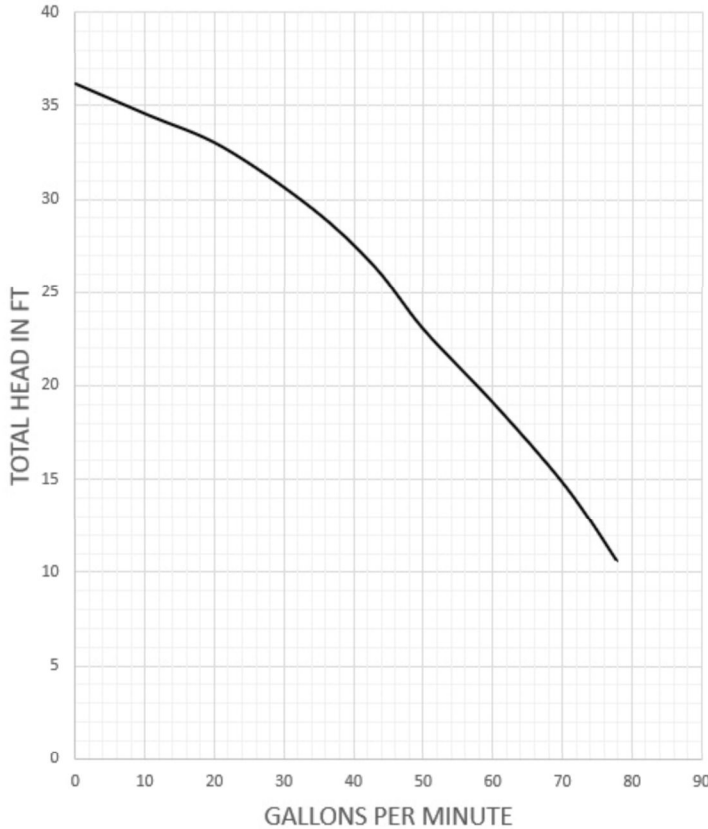
Tungsten carbide tipped grinder impeller

ELECTRICAL DATA:

| MODEL | HP | Volt. | Ph/Hz | RPM | Full Load Amps | Float Switch | Cord Size | Weight (lbs) |
|------------|----|---------|-------|------|----------------|--------------|-----------|--------------|
| WQ-0.75QG1 | 1 | 115 | 1/60 | 3450 | 16 | Optional | 14/3 | 71 |
| WQ-0.75QG2 | 1 | 230 | 1/60 | 3450 | 8 | Optional | 14/3 | 71 |
| WQ-0.75QG3 | 1 | 230/460 | 3/60 | 3450 | 4 | None | 16/4 | 70 |

WQ-0.75QG 1HP Grinder Pumps

PERFORMANCE CURVE

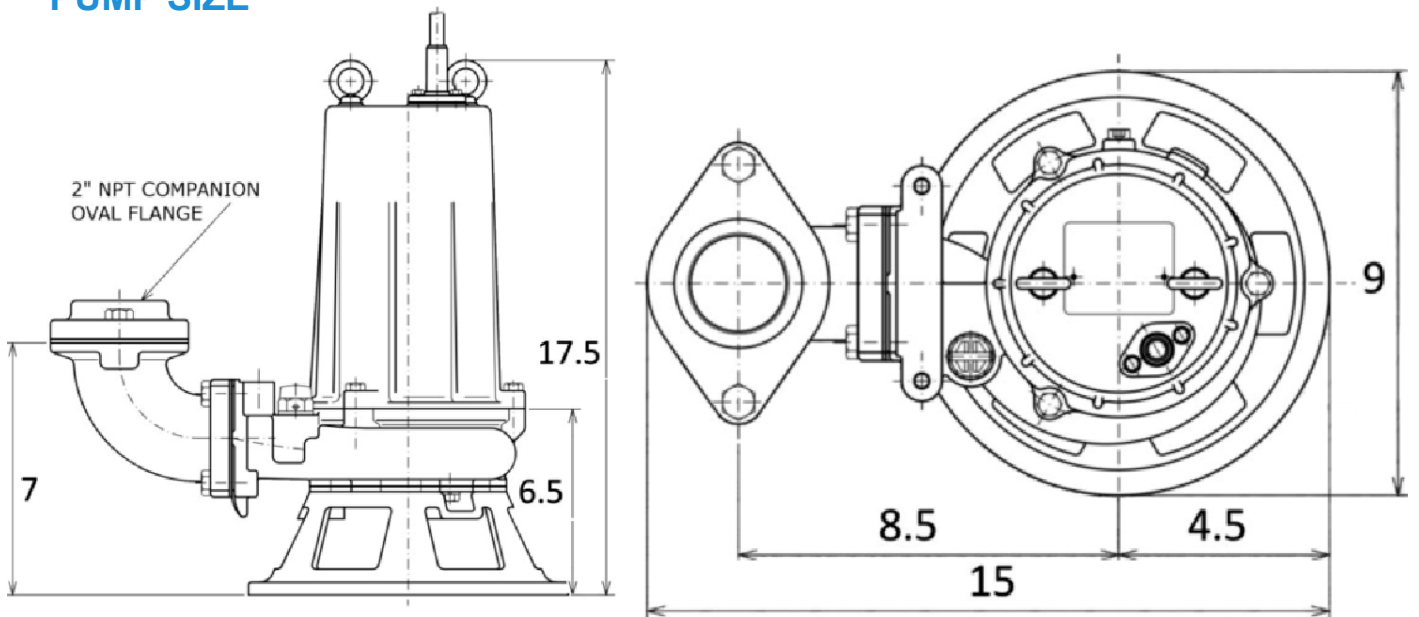


KEY FEATURES:

- All cast iron construction
- Air-filled sealed motor
- Auto-thermal overload reset
- 2" solid handling
- Up to 170F continuous operation
- Hardened cast iron suction plate
- 20-ft strain relief power cord
- Built-in high-temp automatic float switch
- 300 series stainless steel hardware
- Tungsten carbide tipped grinder impeller
- Rotatable elbow for tight installations



PUMP SIZE

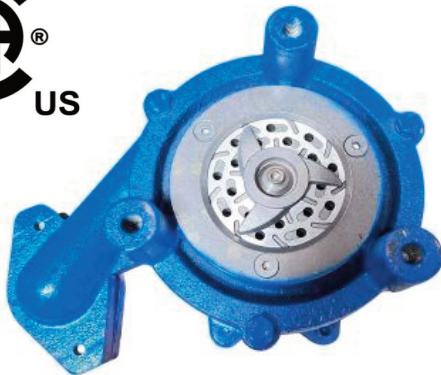




FC SERIES 2HP GRINDER PUMPS



Model: FC2-21 FC2-21C
FHC2-21 FHC2-21C
FC2-23 FHC2-23



SPECIFICATIONS:

DISCHARGE ----- 1-1/4" NPT
LIQUID TEMPERATURE --- 120 degrees F (Continuous)
 140 degrees F (Intermittent)
MOTOR HOUSING----- Cast Iron, ASTM A-48, Class 30
CORD CAP ----- Cast Iron, ASTM A-48, Class 30
VOLUTE ----- Cast Iron, ASTM A-48, Class 30
SEAL PLATE ----- Cast Iron, ASTM A-48, Class 30
IMPELLER ----- Ductile Iron, 10 vane, Open with
 Pump-out Vanes, Dynamically Balanced
SLICER-IMPELLER ---- Hardened 440C Stainless Steel
 56-60 Rockwell C
PLATE-SLICER ----- Hardened 440C Stainless Steel
 56-60 Rockwell C
SHAFT ----- 420 Stainless Steel
SHAFT SEAL--- Mechanical Main (Motor) Secondary(Pump)
 Carbide – Rotating Face Silicon – Rotating Face
 Silicon– Stationary Face Silicon – Stationary Face
 Buna-N - Elastomer
BEARING (UPPER) ---- Single Row, Ball, Oil Lubricated
BEARING (LOWER)---- Single Row, Ball, Oil Lubricated
SLEEVE BEARING ---- Bronze with Oil Groove
HARDWARE----- 300 Series Stainless Steel
O-RINGS ----- Buna-N
CORD ENTRY ----- 30Ft Cord
 Triple Sealed Design
 Compression Grommet – Outer Jacket Seal
 Epoxy Potted – Inner Conductor Seal
 Butt Connector – Inner Wire Strand
 Wicking Blockage
MOTOR (THREE PHASE) --- 2 HP, 3450 RPM, 60 Hz
 Tri-voltage, 200/230/460 volts.
 On-Winding temperature sensor
 Oil Filled, Class F
MOTOR (SINGLE PHASE) --- 2 HP, 3450 RPM, 60 Hz
 Dual-voltage, 200/230 volts
 Overload Protection in the Motor
 Oil Filled, Class F
 Capacitor Start/Capacitor Run
OPTIONAL EQUIPMENT --- Additional Cable Lengths
 Leg Kits

Features:

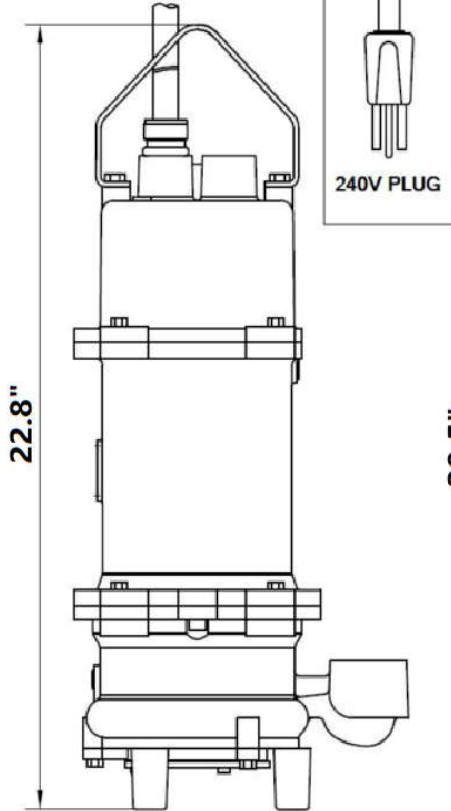
- *New Slicer cutter technology*
- *Stainless steel hardened 440C cutter*
- *Internal or external capacitor models*
- *Cutter parts easily replaceable*



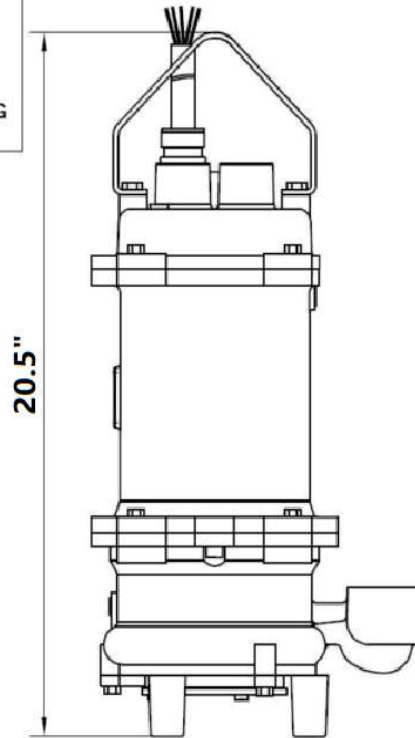


FC SERIES 2HP GRINDER PUMPS

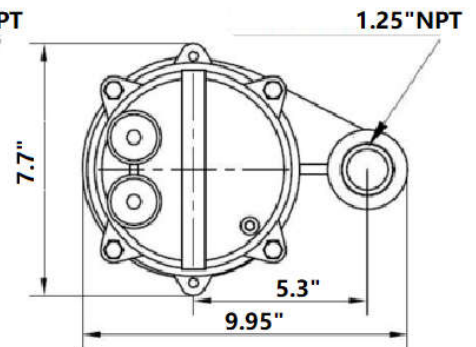
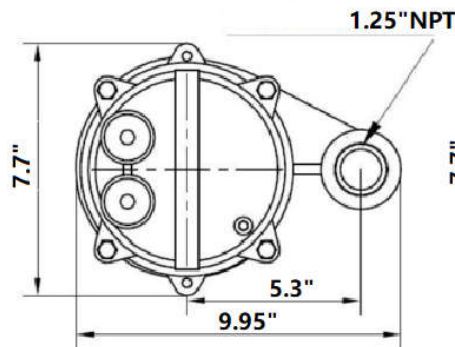
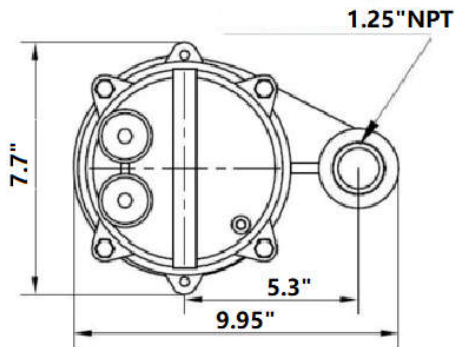
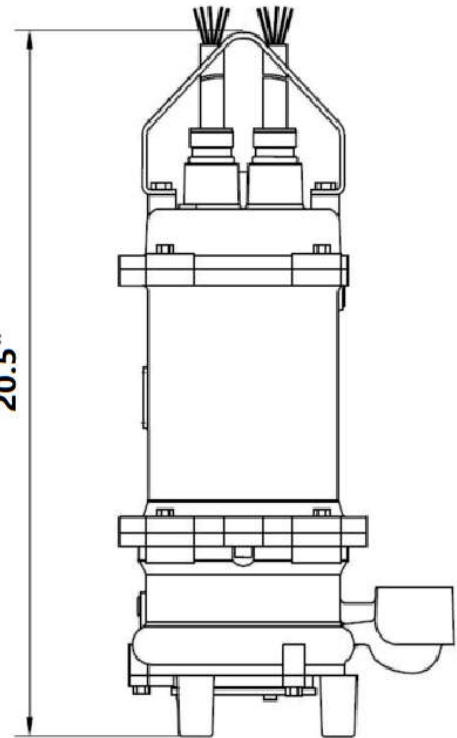
Internal Capacitor
FC2-21C
FHC2-21C



External Capacitor
FC2-21
FHC2-21



Three Phases
FC2-23
FHC2-23



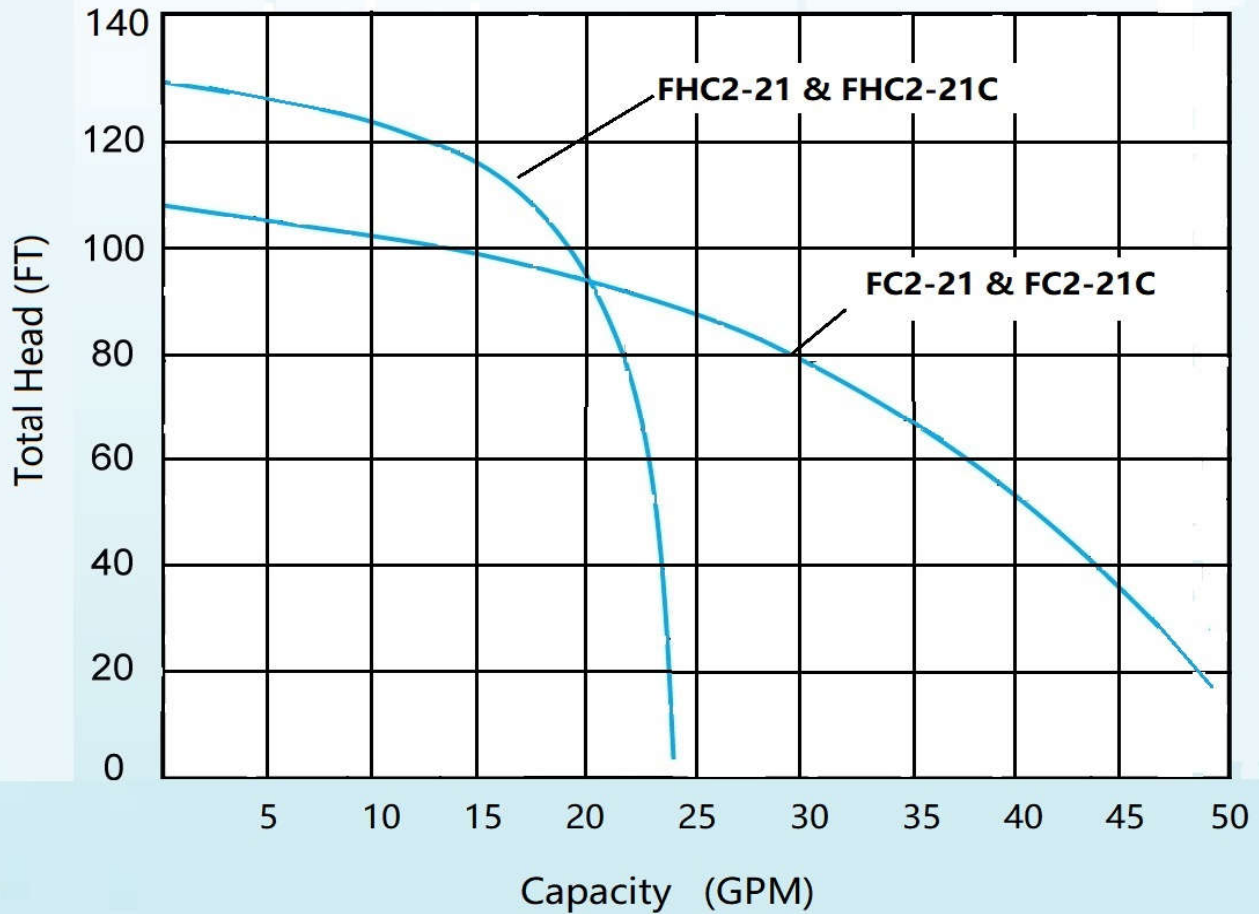
IMPORTANT:

- 1 PUMP MAY BE OPERATED "DRY" FOR EXTENDED PERIODS WITHOUT DAMAGE TO MOTOR AND/OR SEALS
- 2 THIS PUMP IS APPROPRIATE FOR THOSE APPLICATIONS SPECIFIED AS CLASS I DIVISION II HAZARDOUS LOCATIONS.
- 3 THIS PUMP IS NOT APPROPRIATE FOR THOSE APPLICATIONS SPECIFIED AS CALSS I DIVISION I HAZARDOUS LOCATIONS.
- 4 INSTALLATIONS SUCH AS DECORATIVE FOUNTAINS OR WATER FEATURES PROVIDED FOR VISUAL ENJOYMENT MUST BE INSTALLED IN ACCORDANCE WITH THE NATIONAL ELECTRIC CODE ANSI/NFPA 70 AND/OR THE AUTHORITY HAVING JURISDICTION. THIS PUMP IS NOT INTENDED FOR USED IN SWIMMING POOLS, RECREATIONAL WATER PARKS, OR INSTALLATIONS IN WHICH HUMAN CONTACT WITH PUMPED MEDIA IS A COMMON OCCURRENCE.

FC SERIES 2HP GRINDER PUMPS

PERFORMANCE CURVE

**MODEL: FC2-21 & FC2-21C
FHC2-21 & FHC2-21C**

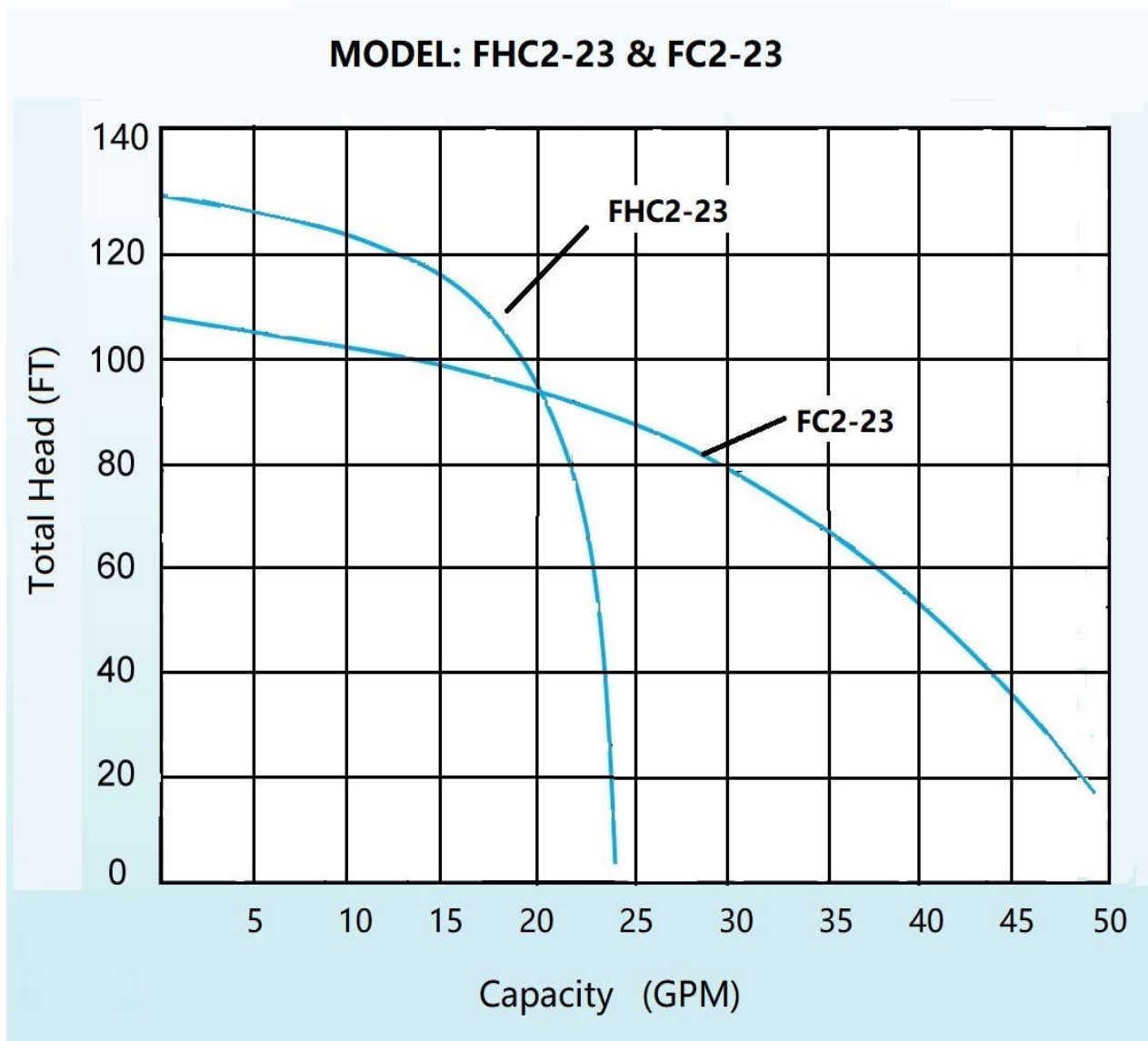


| MODULE | HP | VOLT | PH/Hz | RPM | FULL LOAD AMPS | LOCKED ROTOR AMPS | CORD SIZE | CORD TYPE | WEIGHT (LBS) |
|----------|----|------|-------|------|----------------|-------------------|-----------|-----------|--------------|
| FC2-21C | 2 | 230 | 1/60 | 3450 | 14.5 | 23 | 14AWG/3 | SOOW | 75 |
| FHC2-21C | | | | | | | | | 75 |
| FC2-21 | | | | | | | 14AWG/5 | | 74 |
| FHC2-21 | | | | | | | | | 74 |

- FC2-21C and FHC2-21C feature internal capacitors and do not require a separate control panel for operation.
- FC2-21 and FHC2-21 features external capacitors, requiring a panel with appropriately sized start and run capacitors.
- Testing is performed with water, specific gravity 1.0 @ 38°F @ (20°C), other fluids may vary performance.

FC SERIES 2HP GRINDER PUMPS

PERFORMANCE CURVE



| MODULE | HP | VOLT | PH/Hz | RPM | FULL LOAD AMPS | LOCKED ROTOR AMPS | CORD SIZE | CORD TYPE | WEIGHT (LBS) |
|---------|----|------|-------|------|----------------|-------------------|-----------|-----------|--------------|
| FC2-23 | 2 | 230 | 3/60 | 3450 | 8.8 | 22.5 | 14AWG/4 | SOOW | 74 |
| FHC2-23 | | | | | | | | | 74 |

- 3-phase models require a properly sized control panel
- Testing is performed with water, specific gravity 1.0 @ 38°F @ (20°C), other fluids may vary performance.

FG SERIES 2HP GRINDER PUMPS



Model: FG2-21C/ FHG2-21C
2HP, 3450RPM, 60Hz
High-Flow & High Head

SPECIFICATIONS:

| | |
|-------------------------------------|--|
| DISCHARGE | 1-1/4" NPT, Vertical |
| LIQUID TEMPERATURE | 120°F(40°C) Continuous 140°F(40°C) Intermittent |
| VOLUTE | Cast Iron ASTM A-48,Class 30 |
| MOTOR HOUSING | Cast Iron ASTM A-48,Class 30 |
| SEAL PLATE | Cast Iron ASTM A-48,Class 30 |
| ROTATING RADIAL CUTTER ... | 440 SST Hardened 58-60 Rockwell C |
| STATIONARY RADIAL CUTTER ... | 440 SST Hardened 58-60 Rockwell C |
| IMPELLER | Cast Iron ASTM A-48,Class 30,12 Vane, Vortex with Pump-out Vanes, Dynamically Balanced,ISO G6.3 |
| SHAFT | 420 Stainless Steel |
| O RING | Buna-N |
| SEAL: <i>Design</i> | Single Mechanical in Oil-Filled |
| <i>Material</i> | Rotating Face - Silicon Carbide Stationary Face - Silicon Carbide Elastomer - Buna -N Hardware - 300 Series Stainless |
| CABLE ENTRY | 30 Ft (9.1m) Cord . Compression Grommet-Outer Jacket Seal Epoxy Potted – Inner Conductor Seal Butt Connector – Inner Wire Strand Wicking Blockage |
| UPPER BEARING | Single Row, Ball, Oil lubricated |
| LOWER BEARING | Single Row, Ball, Oil Lubricated |
| MOTOR | Single Phase, 2 HP, 3450 RPM, 60 Hz Dual voltage, 200 / 230 volts Includes Overload Protection in the Motor Oil Filled,Class F Capacitor Start/Capacitor Run |
| OPTIONAL EQUIPMENT: | Cord Length, Impeller Trims |

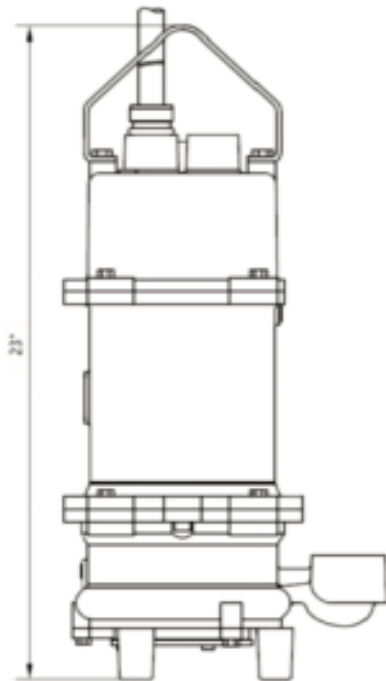
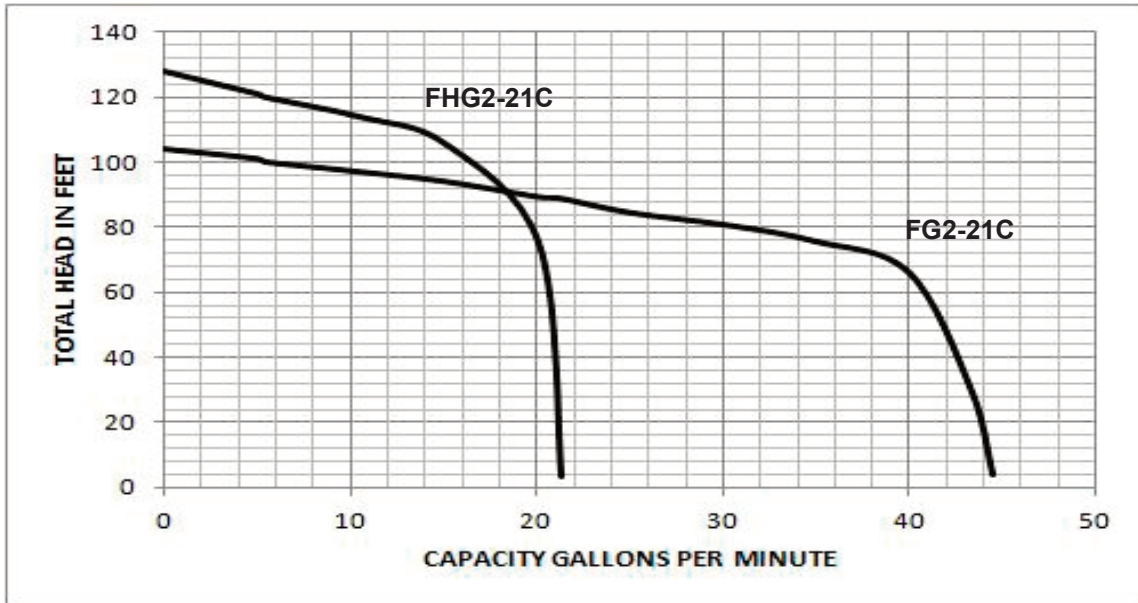
KEY FEATURES:

- Oil-filled motor for maximum motor cooling and constant bearing lubrication
- Recessed impeller reduces radial bearing loads and increases bearing life
- Capacitor start/run design for assured starting, strong torque and grinding under heavy load
- On-Winding current and temperature-sensitive overload
- Pressed stator for precise shaft / bearing alignment, long life
- Shredding ring and grinder impeller are replaceable without dismantling pump or motor
- 300 Series Stainless Steel fasteners

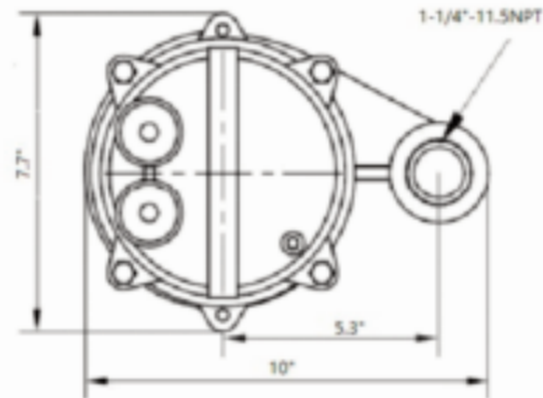


FG SERIES 2HP GRINDER PUMPS

PERFORMANCE CURVE



PUMP SIZE



| MODULE | HP | VOLT | PH/Hz | RPM | FULL LOAD AMPS | LOCKED ROTOR AMPS | CORD SIZE | CORD TYPE | CORD O.D. in (mm) |
|----------|----|---------|-------|------|----------------|-------------------|-----------|-----------|-------------------|
| FG2-21C | 2 | 200~230 | 1/60 | 3450 | 14.5 | 23 | 14/4 | SOOW | 0.57 (14.5) |
| FHG2-21C | | | | | | | | | |

2HP EXTREMELY HIGH HEAD GRINDER PUMPS



Model: FNG2-21C
2HP, 3450RPM, 60Hz

SPECIFICATIONS:

| | |
|----------------------------------|--|
| DISCHARGE | 1-1/4" NPT, Vertical |
| LIQUID TEMPERATURE | 120°F(40°C) Continuous 140°F(40°C) Intermittent |
| CORD CAP | Cast Iron ASTM A-48,Class 30 |
| MOTOR HOUSING | Cast Iron ASTM A-48,Class 30 |
| VOLUTE | Ductile Iron |
| SEAL PLATE | Cast Iron ASTM A-48,Class 30 |
| IMPELLER | 440C Stainless Steel Two-sided turbine impeller, 60 Vane Dynamically Balanced,ISO G6.3 |
| GRINDER IMPELLER | Hardened 440C Stainless Steel 56-60 Rockwell C |
| SHREDDING RING | Hardened 440C Stainless Steel 56-60 Rockwell C |
| SHAFT | 420 Stainless Steel |
| O RING | Buna-N |
| SEAL: <i>Design</i> | Single Mechanical in Oil-Filled |
| <i>Material</i> | Rotating Face - Silicon Carbide Stationary Face - Silicon Carbide Elastomer - Buna -N Hardware - 300 Series Stainless |
| CABLE ENTRY | 30 Ft (9.1m) Cord . Compression Grommet-Outer Jacket Seal Epoxy Potted – Inner Conductor Seal Butt Connector – Inner Wire Strand Wicking Blockage |
| UPPER BEARING | Single Row, Ball, Oil lubricated |
| LOWER BEARING | Single Row, Ball, Oil Lubricated |
| MOTOR | Single Phase, 2 HP, 3450 RPM, 60 Hz Dual voltage, 200 / 230 volts Includes Overload Protection in the Motor Oil Filled,Class F Capacitor Start / Capacitor Run |
| OPTIONAL EQUIPMENT: | Cord Length, Leg Kit Slicer cutter --FNC Version |

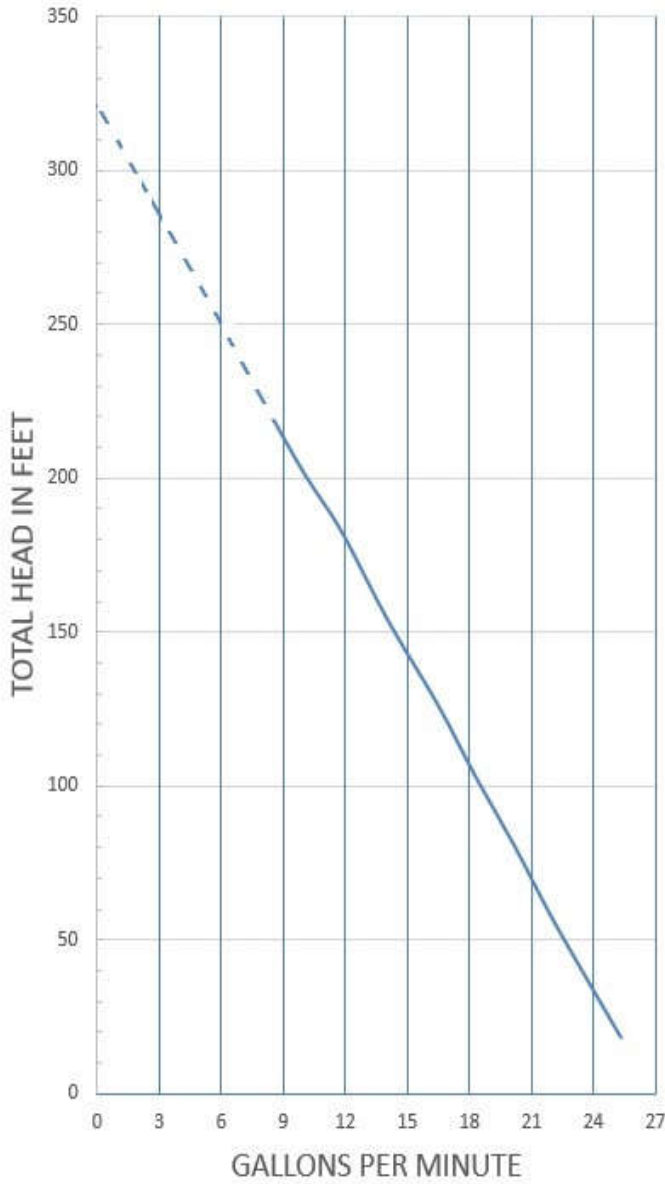
KEY FEATURES:

- Oil-filled motor for maximum motor cooling and constant bearing lubrication
- Capacitor start/run design for assured starting, strong torque and grinding under heavy load
- On-Winding current and temperature-sensitive overload
- Pressed stator for precise shaft / bearing alignment, long life
- Extremely high head up to 320 feet
- Revolutionarily Two-sided turbine impeller design
- Grinder impeller and shredding ring are made of 440C stainless steel hardened to 56-60 Rockwell C
- Clog-free volute design

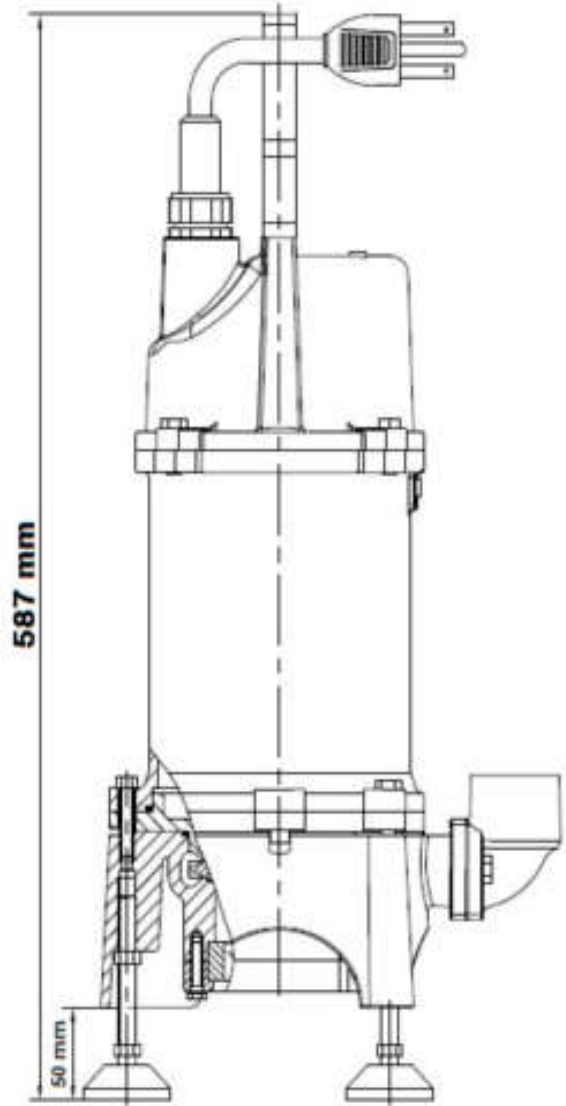


2HP EXTREMELY HIGH HEAD GRINDER PUMPS

PERFORMANCE CURVE



PUMP SIZE



ELECTRICAL DATA:

| MODEL | HP | VOLT | PH/Hz | RPM | FULL LOAD AMPS | LOCKED ROTOR AMPS | CORD SIZE | CORD TYPE | WEIGHT (LBS) |
|----------|----|---------|-------|------|----------------|-------------------|-----------|-----------|--------------|
| FNG2-21C | 2 | 200~230 | 1/60 | 3450 | 15 | 25 | 14/3 | SOW | 88 |

FZG 5HP/7.5HP Submersible Grinder Pumps



SPECIFICATIONS:

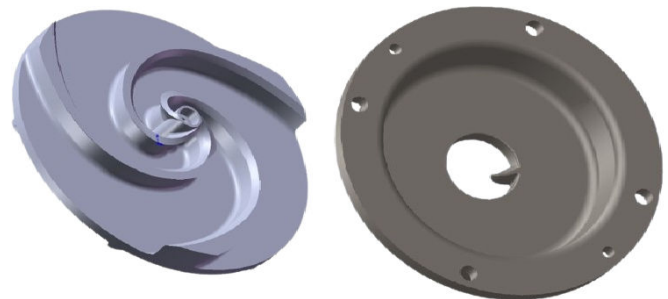
- DISCHARGE** Horizontal Flange, Combination 2.5" & 3"
- LIQUID TEMPERATURE** .. 120 degrees F (Continuous)
140 degrees F. (Intermittent)
- VOLUTE** Cast Iron ASTM A-48, Class 30
- MOTOR HOUSING** Cast Iron ASTM A-48, Class 30
- SEAL PLATE** Cast Iron ASTM A-48, Class 30
- SHREDDING RING** Hardened 440C Stainless Steel
56-60 Rockwell C
- GRINDER IMPELLER** Hardened 440C Stainless Steel
56-60 Rockwell C
- SHAFT** 420 Stainless Steel
- O RING** Buna-N
- CORD ENTRY** Triple Sealed Design
Compression Grommet – Outer Jacket Seal
Epoxy Potted – Inner Conductor Seal
Butt Connector – Inner Wire Strand Wicking Blockage
- SEAL: Motor Side**..... Rotating Face - Graphite
Stationary Face - Silicon Carbide
Pump Side..... Rotating Face - Silicon Carbide
Stationary Face - Silicon Carbide
Elastomer - Buna -N
Hardware - 300 Series Stainless
- UPPER BEARING** Single Row, Ball, Oil lubricated
- LOWER BEARING** Single Row, Ball, Oil Lubricated
- MOTOR** 5 & 7.5 HP, 3450 RPM, 60 Hz
Dual-voltage, 230 / 460 volts, Air Filled, Class F
On-Winding temperature sensor and water leakage probe
- OPTIONAL EQUIPMENT:** Cord Length & Impeller Trim

APPLICATIONS:

The FZG series centrifugal grinder/Chopper pumps easily handle residential, commercial or industrial sanitary waste, reducing it to a fine slurry. The pump is designed for use in pressure sewer applications or any piping network. The recessed vortex impeller design provides trouble free, non-overloading operation over the entire performance curve.

The hardened stainless steel grinder assembly provides many years of dependable operation.

Model: FZG-53, 230V/460V
FZG-73, 230V/460V

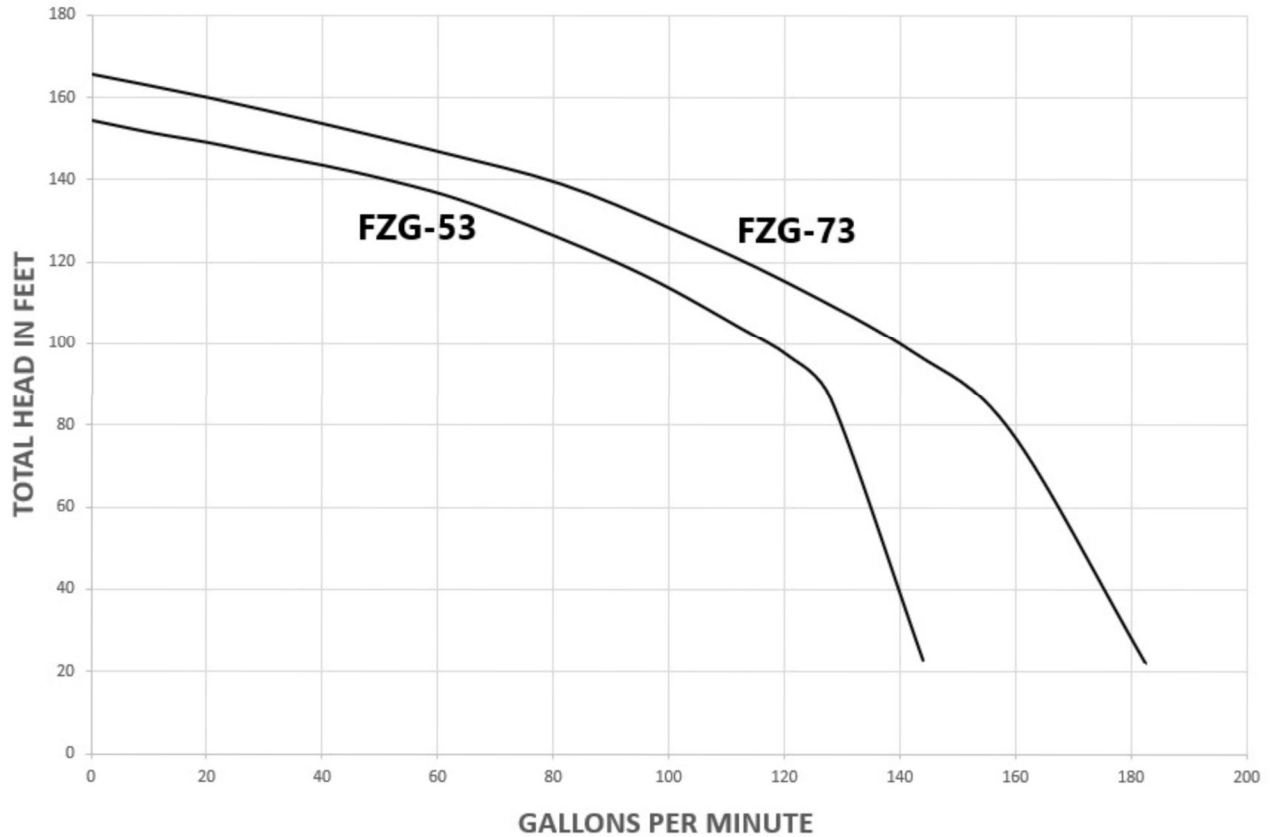


ELECTRICAL DATA:

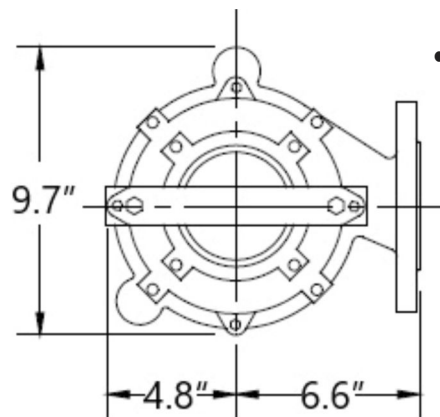
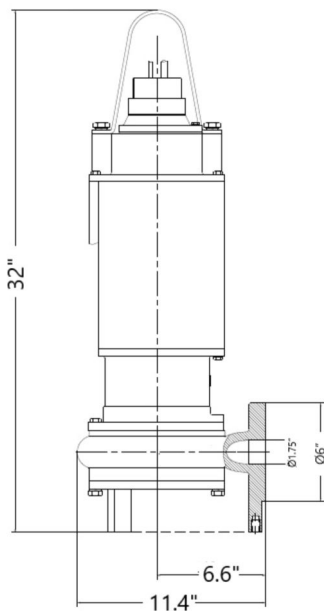
| MODEL | HP | Volt. | Ph/Hz | RPM | Full Load Amps | Impeller Size (mm) | Weight (lbs) |
|--------|-----|---------|-------|------|----------------|--------------------|--------------|
| FZG-53 | 5 | 230/460 | 3/60 | 3450 | 22/11 | 152.4 | 191 |
| FZG-73 | 7.5 | 230/460 | 3/60 | 3450 | 27/13.5 | 165.1 | 195 |

FZG 5HP/7.5HP Submersible Grinder Pumps

PERFORMANCE CURVE



PUMP SIZE



KEY FEATURES:

- Strong Air-filled sealed motor
- Dual Silicon-Carbide Mechanical Shaft Seals
- Pressed-In Motor with Internal Overload Protection
- Internal Moisture Detection



140TY/180TY/210TY/250TY SUBMERSIBLE MOTORS



**MODEL: 140TY, 1-3 HP
180TY, 5-7.5HP
210TY, 7.5-20HP
250TY, 20-50HP**

KEY FEATURES:

- Energy efficient and Premium efficient designs
- 1.15 S.F. on Sine Wave, 1.0 S.F. on inverter
- Class F insulation
- Cast Iron Construction
- P-Base mounting flange
- 420 Stainless Steel Shaft
- Type 21 carbon ceramic mechanical shaft seals. O-rings and Sealed fits in stator housing and end plates
- Non-wicking, potted cable cap assembly securely attaches and seals the power leads to the frame. Cable cap design allows for easy removal and reconnection of the power cable.
- Drive end oil chamber provides a barrier against moisture ingress into the bearings as well as lubricating the upper seal. Oil chamber is filled prior to shipment.
- Moisture probes mounted in oil chamber to detect ingress of moisture. Moisture control relay supplied by customer.
- (2) Integral cast in lifting provisions for easy, balanced lifting and mounting of the motor
- Deep groove Conrad type ball bearings, Class 3 fit per AFBMA std. 20
- (2) N.C. Thermostats
- 404 Corrosion resistant stainless steel nameplate and exterior hardware
- 30 foot power & control cables
- Neoprene jacketed power and control cables
- 2 Year Prorated Warranty from date of Manufacture.

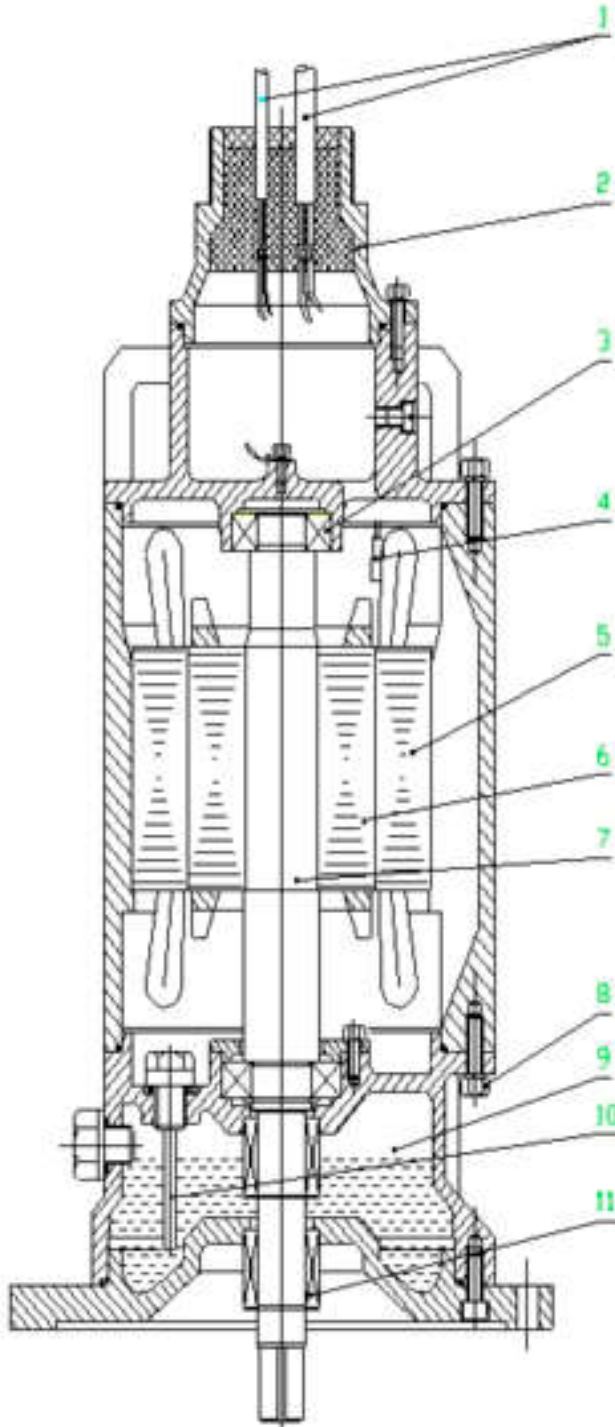
Common Options:

- *Class H insulation system*
- *Special paint (Coal tar epoxy paint)*
- *Inner and outer seals options*
- *Cable lengths to 100 feet (Longer lengths require approval)*
- *Shaft materials*
- *Water Jacket Design (to reduce frame size requirements)*
- *One size smaller flange and shaft*



140TY/180TY/210TY/250TY SUBMERSIBLE MOTORS

Submersible Motor Construction



1. CABLE

Specifically designed for submersible applications chloroprene cable withstands temperatures of up to 90°C.

2. CABLE ENTRY POTTING

Epoxy-filled, non-wicking cable cap assembly

3. BEARINGS

Single row, deep groove or double row angular contact, Conrad type

4. THERMAL PROTECTOR

Embedded in the motor windings with three automatic-resetting bimetallic thermostats

5. MOTOR

An air filled, three phase squirrel cage induction motor for submersible or dry pit duty.

6. ROTOR

Cast aluminum, dynamically balanced

7. SHAFT

420 stainless steel

8. HARDWARE

304 stainless steel.

9. OIL CHAMBER

Acts as a barrier to trap moisture and provide sufficient time for shut down. Also provides lubrication for upper seal

10. LEAKAGE DETECTOR

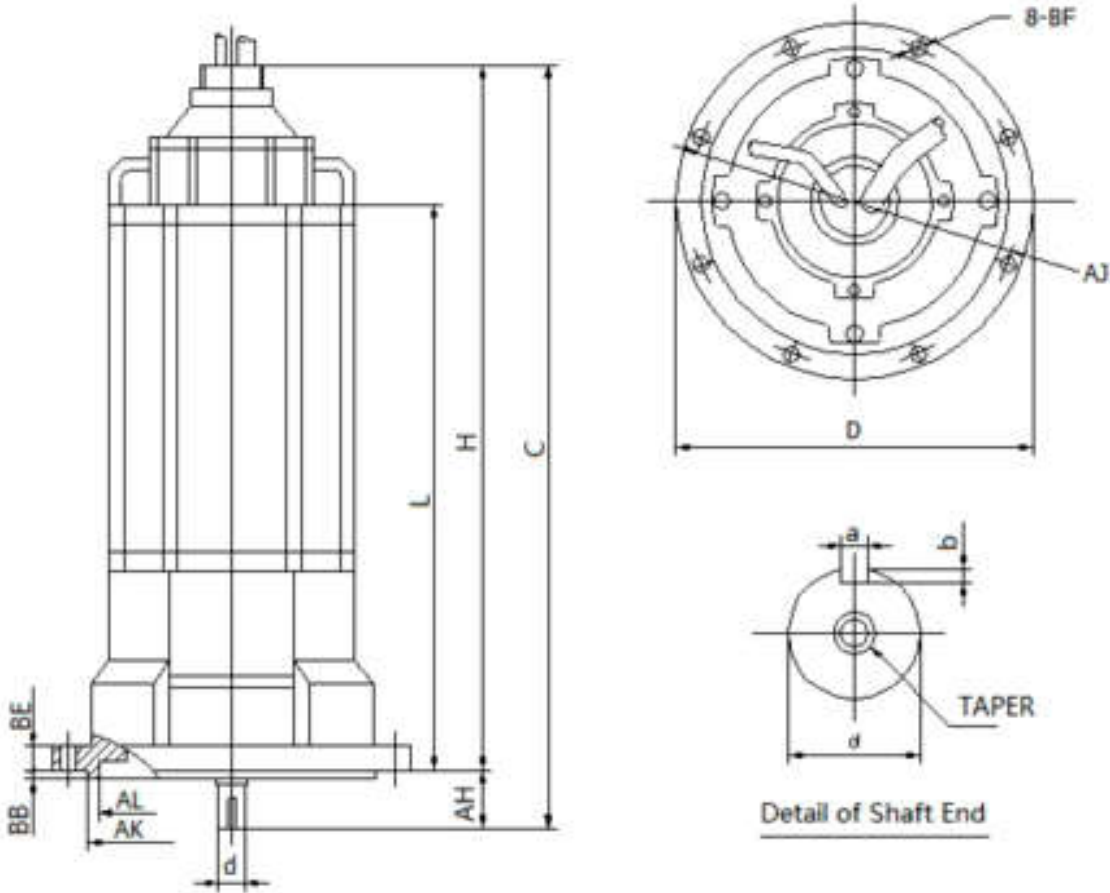
A single-electrode or dual-electrode leakage detectors are mounted in oil chamber to detect ingress of water.

11. SHAFT SEALS

Two independently mounted Type 21 mechanical face type seals.

140TY/180TY/210TY/250TY SUBMERSIBLE MOTORS

Submersible Motor Size



DIMENSIONS: (INCHES)

| FRAME | C | H | AH | L | BB | BE | AK | AL | D | AJ | BF | d | KEYWAY | |
|-------|-------|-------|------|-------|------|------|--------|-------|--------|-------|------|-------|--------|------|
| | | | | | | | | | | | | | a | b |
| 140TY | 22.82 | 21.26 | 1.56 | 15.3 | | 0.75 | | 9.126 | 11.062 | 10.00 | .044 | 0.875 | 0.187 | 0.09 |
| 180TY | 26.66 | 24.38 | 2.28 | 17.3 | | 0.75 | | 10.63 | 12.375 | 11.5 | 0.56 | 1.25 | 0.25 | 0.12 |
| 210TY | 32.03 | 30.47 | 1.56 | 24.1 | 0.25 | 0.75 | 13.125 | 12.00 | 15.25 | 14.12 | 0.56 | 1.438 | 0.375 | 0.19 |
| 250TY | 38.93 | 36.61 | 2.32 | 26.65 | 0.25 | 0.88 | 15.00 | 14.00 | 17.00 | 16.00 | 0.69 | 1.75 | 0.375 | 0.19 |

(1)Tolerance is +0.00 inch , -0.06 inch (for"AK"&"d")

(2)L: Minimum submerged depth

Dimensions of flange and shaft extension are optional

140TY/180TY/210TY/250TY SUBMERSIBLE MOTORS

F&Q offers submersible motors serving both municipal and industrial wastewater markets for both wet & dry pit applications. Wet pit motors use the effluent for cooling and can run 15 minutes in air. Dry pit motors are designed to run continuously in air or submerged when properly applied. F&Q also offers designs suitable for rugged slurry pump applications, aerators and mixers.

| Frame Size | Model No. | Poles | Out Power (Hp) | Rated C't (A) | Efficiency | | | Power Factor | | | Rated Speed (r/min) | Starting Characteristics | | |
|------------|----------------|-------|----------------|---------------|------------|---------|---------|--------------|---------|---------|---------------------|--------------------------|--------|--------|
| | | | | | 1/1 (%) | 3/4 (%) | 1/2 (%) | 1/1 (%) | 3/4 (%) | 1/2 (%) | | Is (A) | Ts (%) | Tm (%) |
| 140TY | 140TY-2P-3HP | 2 | 3 | 4.5 | 74 | 71 | 64 | 85 | 81 | 73 | 3460 | 31 | 290 | 250 |
| | 140TY-4P-1HP | 4 | 1 | 2 | 73 | 71 | 68 | 76 | 71 | 60 | 1760 | 13.5 | 340 | 260 |
| | 140TY-4P-1.5HP | 4 | 1.5 | 2.7 | 74 | 72.5 | 68 | 78 | 73 | 61.5 | 1745 | 19 | 320 | 250 |
| | 140TY-4P-2HP | 4 | 2 | 3.1 | 75 | 73.5 | 69 | 80.5 | 74 | 62.5 | 1735 | 23 | 350 | 270 |
| | 140TY-4P-3HP | 4 | 3 | 4.3 | 77 | 76.5 | 73.5 | 83.5 | 77.5 | 66.5 | 1725 | 30 | 310 | 250 |
| 180TY | 180TY-2P-7.5HP | 2 | 7.5 | 10 | 76 | 73.5 | 67.5 | 92.5 | 91.5 | 88 | 3450 | 58 | 270 | 260 |
| | 180TY-4P-5HP | 4 | 5 | 6.7 | 80 | 79 | 79 | 84 | 83 | 80 | 1765 | 47 | 290 | 230 |
| | 180TY-4P-7.5HP | 4 | 7.5 | 10 | 84 | 83 | 81 | 86 | 81 | 70.5 | 1735 | 63 | 270 | 250 |
| 210TY | 210TY-4P-10HP | 4 | 10 | 15.5 | 87 | 86 | 84 | 85 | 82.5 | 75 | 1754 | 92 | 270 | 250 |
| | 210TY-4P-15HP | 4 | 15 | 19.5 | 88 | 87 | 85 | 86 | 82 | 78 | 1750 | 135 | 250 | 240 |
| | 210TY-4P-20HP | 4 | 20 | 24 | 89 | 87 | 85.5 | 88 | 84 | 80 | 1750 | 165 | 235 | 210 |
| | 210TY-6P-7.5HP | 6 | 7.5 | 11.5 | 80 | 80 | 76.5 | 76 | 69.5 | 57.5 | 1143 | 62 | 190 | 205 |
| | 210TY-6P-10HP | 6 | 10 | 15 | 81 | 81 | 78.5 | 77 | 71 | 59 | 1140 | 78 | 180 | 200 |
| | 210TY-6P-15HP | 6 | 15 | 20.9 | 85 | 84.5 | 82.5 | 79 | 73 | 61.5 | 1160 | 112 | 190 | 210 |
| | 210TY-8P-10HP | 8 | 10 | 14.8 | 82.5 | 82.5 | 80 | 76.5 | 69.5 | 57 | 860 | 72 | 170 | 205 |
| 250TY | 250TY-2P-50HP | 2 | 50 | 58 | 88 | 87.5 | 86 | 91.5 | 90 | 85 | 3460 | 402 | 220 | 250 |
| | 250TY-4P-50HP | 4 | 50 | 61 | 90 | 90 | 88.5 | 85.5 | 82.5 | 74 | 1760 | 340 | 200 | 210 |
| | 250TY-6P-20HP | 6 | 20 | 26.7 | 86.5 | 86 | 84 | 81 | 75.5 | 64.5 | 1160 | 140 | 180 | 210 |
| | 250TY-6P-25HP | 6 | 25 | 34.1 | 87 | 86.5 | 84.5 | 79 | 73 | 62 | 1160 | 185 | 200 | 220 |
| | 250TY-6P-40HP | 6 | 40 | 53 | 88 | 88 | 86.5 | 81 | 76.5 | 66 | 1165 | 285 | 170 | 200 |

Note: Starting Characteristics

Is: Locked Rotor Current

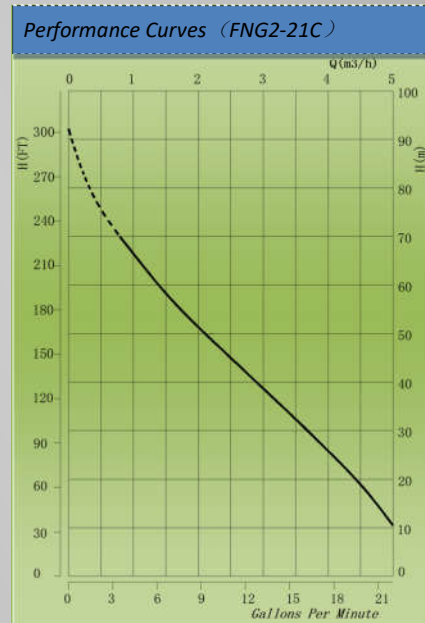
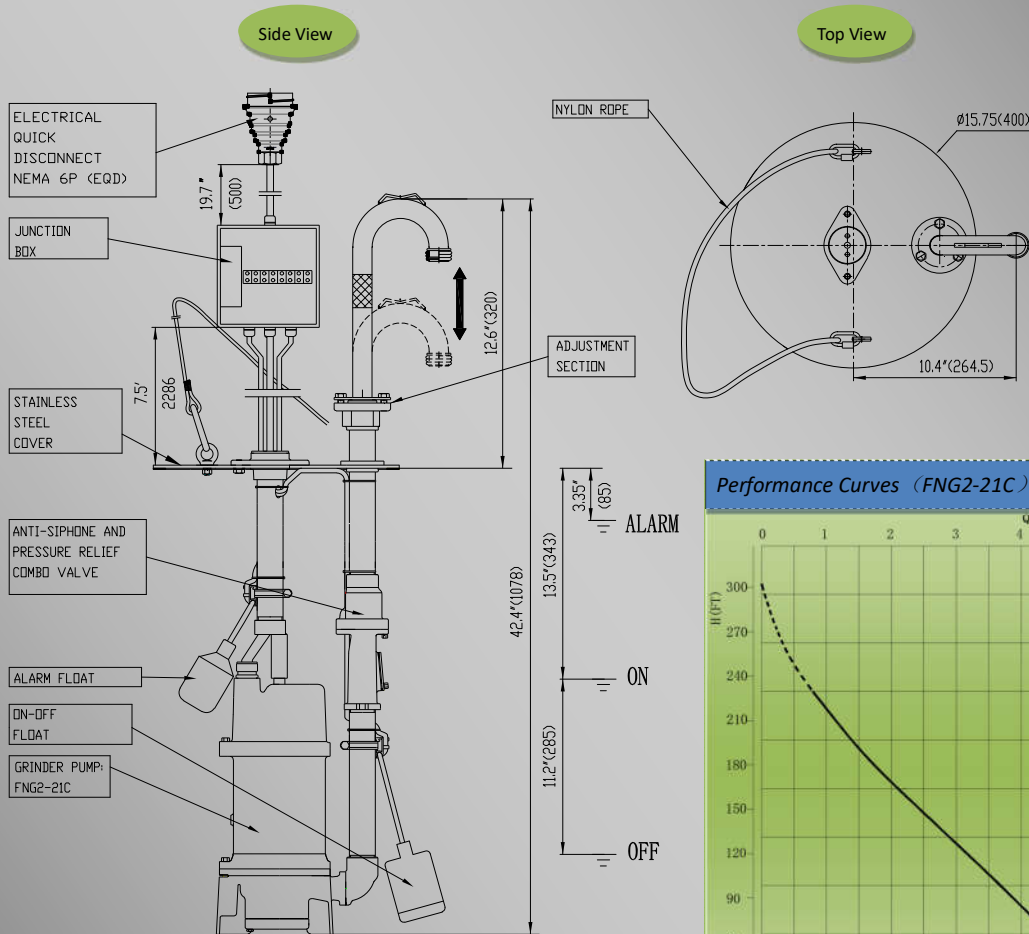
Tm: Breakdown Torque

Ts: Locked Rotor Torque

DOL: Direct on Line Start

SPECIFICATIONS

| Model | Pump | Volts | Amps | HP | PH | HZ | RPM | Weight(lbs) |
|----------------|------------|---------|-------|----|----|----|------|-------------|
| FNG2-21C-SAJ | FNG2-21C | 208-230 | <17 | 2 | 1 | 60 | 3450 | 118 |
| FNG2-21C-FAJ | FNG2-21C | | | | | | | |
| FC2-21C-SCJ | FC2-21C | | <14.5 | | | | | 115 |
| FC2-21C-FCJ | FC2-21C | | | | | | | |
| FNG2-21CFZ-FAN | FNG2-21CFZ | | <17 | | | | | 115 |

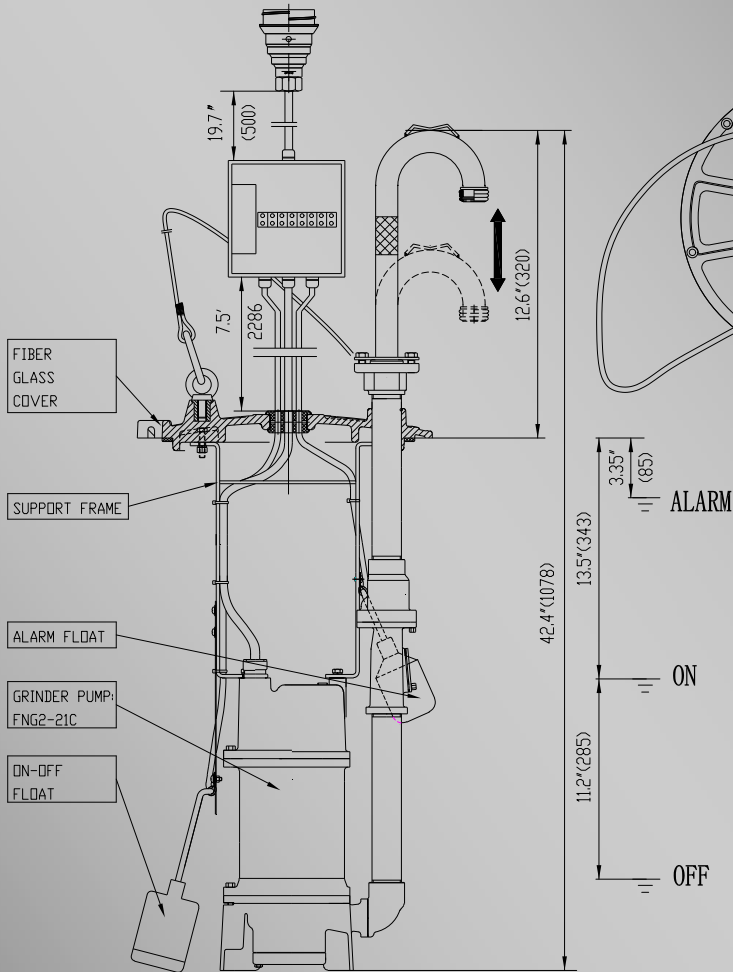


Model: FNG2-21C-SAJ

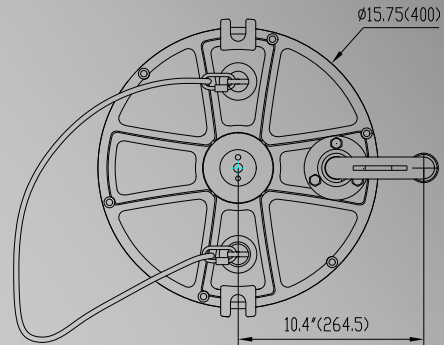
Features:

- Fast, simple, and easy installation
- Watertight junction box for ease of installation and servicing
- 1-1/4" SST anti-siphon and pressure relief combo valve
- 1-1/4" NPT SST piping
- Adjustable alarm float switch preset at factory
- High starting torque, automatic grinder pump (FNG2-21C) with mechanical float switch
- Quick disconnect plug
- Rigid construction for ease of handling
- Lightweight
- 316 Non-slip stainless steel cover

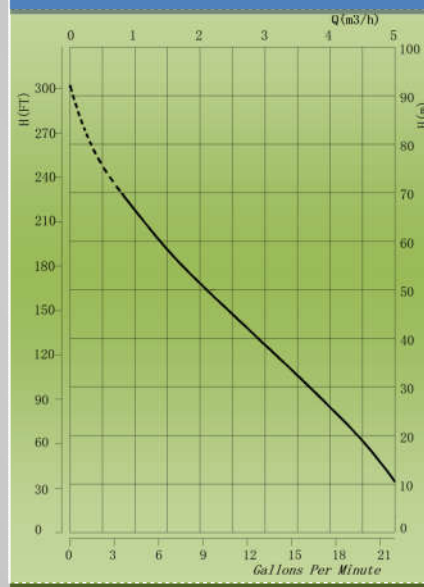
Side View



Top View



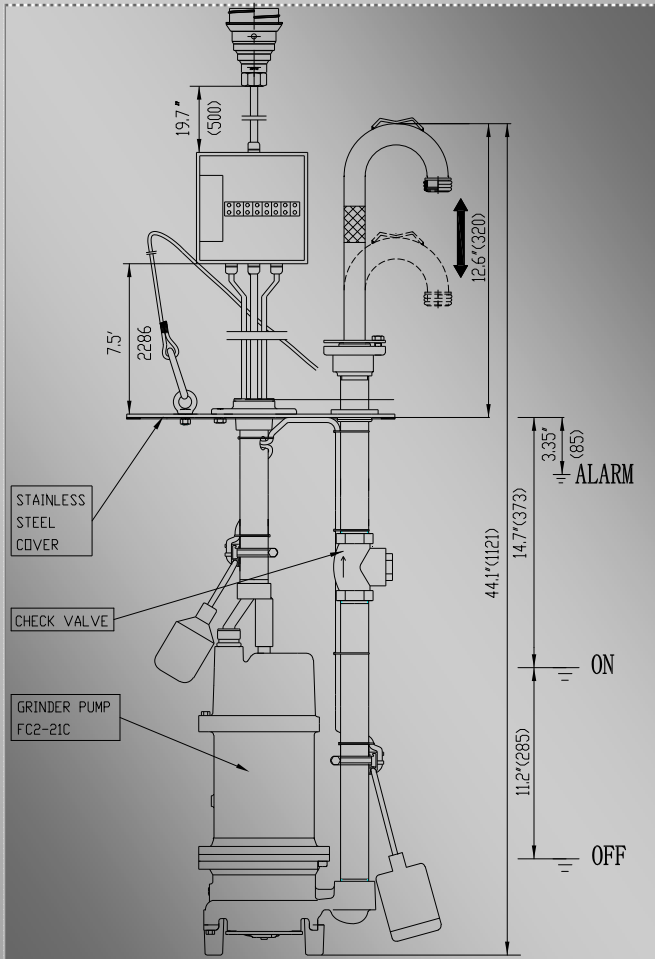
Performance Curves (FNG2-21C)



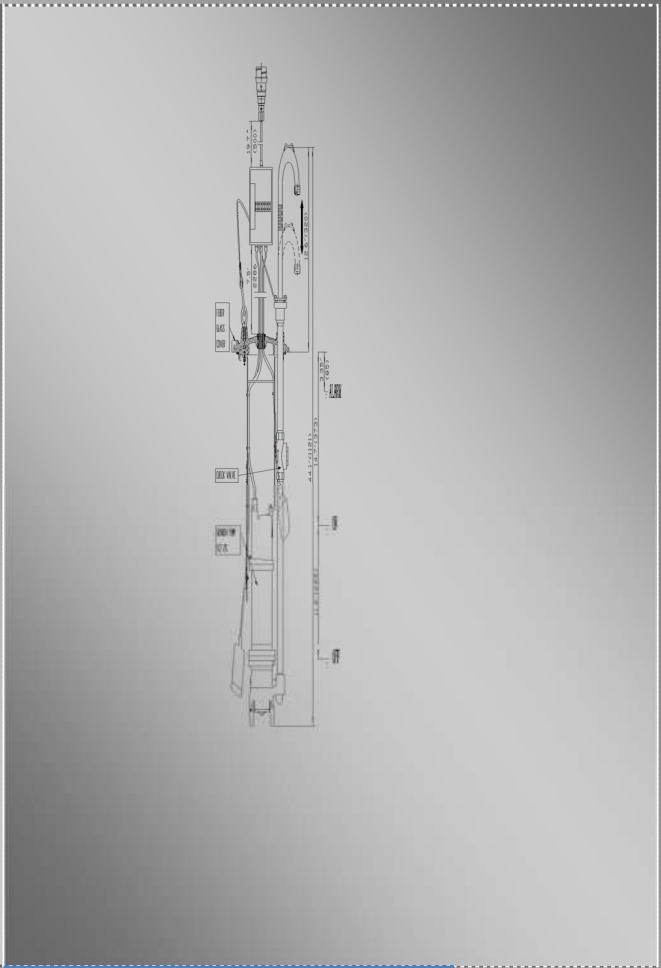
Model: FNG2-21C-FAJ

Features:

- Fast, simple, and easy installation
- Watertight junction box for ease of installation and servicing.
- 1-1/4" SST anti-siphon and pressure relief combo valve
- 1-1/4" NPT SST piping
- Adjustable alarm float switch preset at factory
- High starting torque, automatic grinder pump (FNG2-21C) with mechanical float switch
- Quick disconnect plug
- Rigid construction for ease of handling
- Lightweight
- Fiber glass cover



Model: FC2-21C-SCJ

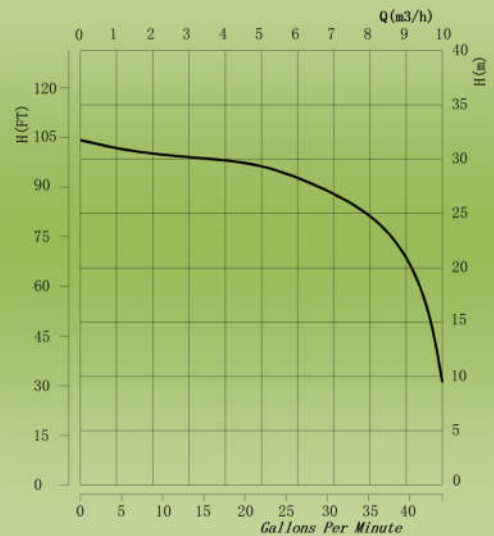


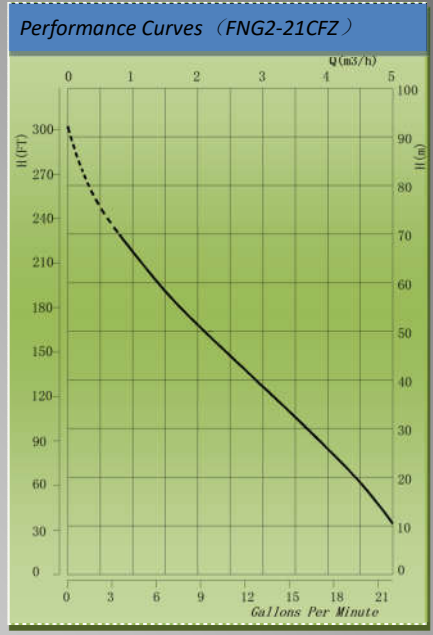
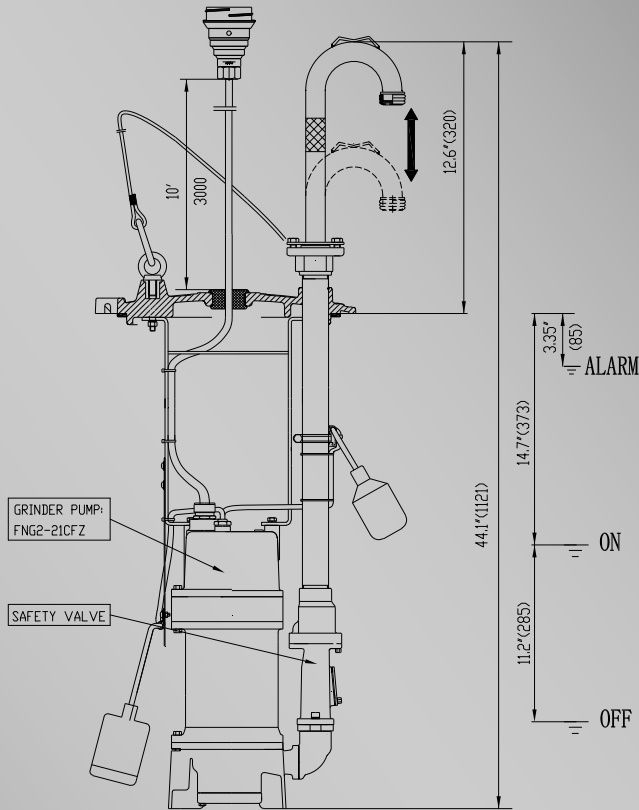
Model: FC2-21C-FCJ

Features:

- Fast, simple, and easy installation
- Watertight junction box for ease of installation and servicing.
- 1-1/4" SST check valve
- 1-1/4" NPT SST piping
- Adjustable alarm float switch preset at factory
- High starting torque, automatic grinder pump (FC2-21C) with mechanical float switch
- Quick disconnect plug
- Rigid construction for ease of handling
- Lightweight
- 316 Non-slip stainless steel cover / Fiber glass cover

Performance Curves(FC2-21C)





Model: FNG2-21CFZ-FAN

Features:

- Fast, simple, and easy installation
- No junction box, directly connect to E-one original equipment
- 1-1/4" SST anti-siphon and pressure relief combo valve
- 1-1/4" NPT SST piping
- Adjustable alarm float switch preset at factory
- High starting torque, automatic grinder pump (FNG2-21CFZ) with mechanical float switch
- Quick disconnect plug
- Rigid construction for ease of handling
- Lightweight
- Fiber glass cover



**SST cover with
Anti-slip pattern**



Fiber-glass cover



**Adjustable goose-
neck pipe**



**Anti-siphon and
pressure relief
combo valve**

F&Q Pumps Inc.

10617 E. Rush Street, S. El Monte, CA 91733

Ph.: 626-455-0884 Fax: 626-448-9462

sales@fqpumps.com www.fqpumps.com

e/One® is a registered trademark of Environment One Corporation and is not affiliated with F&Q Pumps Inc.



SUMBERSIBLE DEWATERING PUMPS QDX-B SEIRES



APPLICATIONS

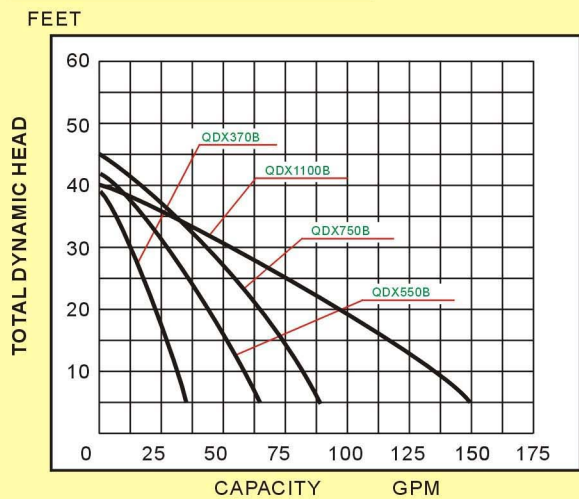
Corrosion resistant SS submersible dewatering pumps, specially designed for dewatering construction sites, mines; subways, tunnels and civil engineering; utilities; decorative fountains, waterfalls, and fish ponds; residential, commercial wastewater discharge.

| Model | Power | Voltage | Amp. | RPM. | GPM at head(ft) | | | | | | | Max. Head | Discharge | Weight |
|----------|---------|---------|-------|---------|-----------------|-----|-----|----|----|----|----|-----------|-----------|--------|
| | | | | | 5 | 10 | 15 | 20 | 25 | 30 | 35 | | | |
| QDX370B | 0.5 HP | 115V | 7.2 A | 3450RPM | 35 | 31 | 27 | 23 | 18 | 13 | 7 | 38 ft | 1.5" | 28 lbs |
| QDX550B | 0.75 HP | 115V | 7.2 A | 3450RPM | 66 | 55 | 48 | 42 | 31 | 25 | 13 | 42 ft | 1.5" | 29 lbs |
| QDX750B | 1 HP | 115V | 9 A | 3450RPM | 90 | 88 | 80 | 70 | 53 | 36 | 19 | 45 ft | 1.5" | 32 lbs |
| QDX1100B | 1.5 HP | 115V | 15 A | 3450RPM | 150 | 136 | 119 | 97 | 66 | 52 | 31 | 40 ft | 1.5" | 33 lbs |

PARTS SPECIFICATIONS

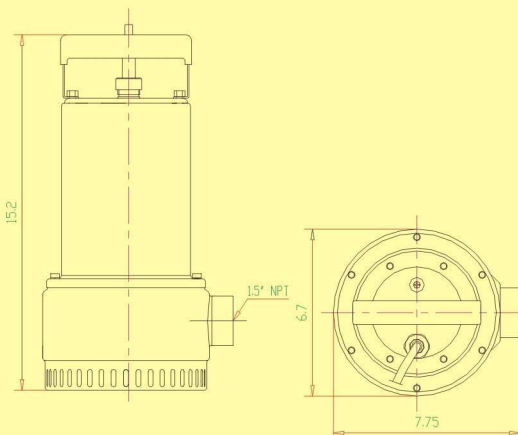
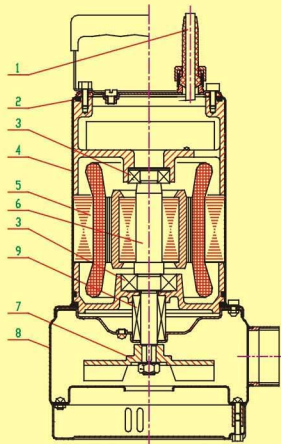
- Power Cable:** Waterproof 30 ft. cord, pressure grommet for sealing and strain relief.
- O-ring:** Buna-N, assures positive sealing against oil leakage.
- Bearing:** Upper and lower ball bearing construction to carry all radial and thrust loads.
- Casing (Motor Housing):** Corrosion resistant AISI 304 SS designed for long lasting performance.
- Motor:** 2 poles, squirrel cage induction, air filled single phase, permanent split capacitor type, built-in thermal protector, with automatic reset.
- Shaft:** Corrosion resistance stainless steel.
- Impeller:** AISI type 304 stainless steel.
- Volute Casing:** Corrosion resistant AISI 304 SS. Designed with bottom strainer.
- Dual Mechanical Seals:** stainless steel metal parts, Buna-N elastomers.
Upper Seal: Carbon VS Ceramic
Lower Seal: Silicon Carbide VS Silicon Carbide

PERFORMANCE CURVE



DIMENSIONS

(All dimensions are in inches. Do not use for construction purpose.)



**DON NOT USE THIS PUMP TO TRANSFER FLAMMABLE LIQUIDS
THIS PUMP IS NOT RECOMMENDED FOR USE IN LOCATIONS SPECIFIED AS HAZARDOUS**



SUMBERSIBLE SEWAGE PUMPS WQ-B SEIRES



APPLICATIONS

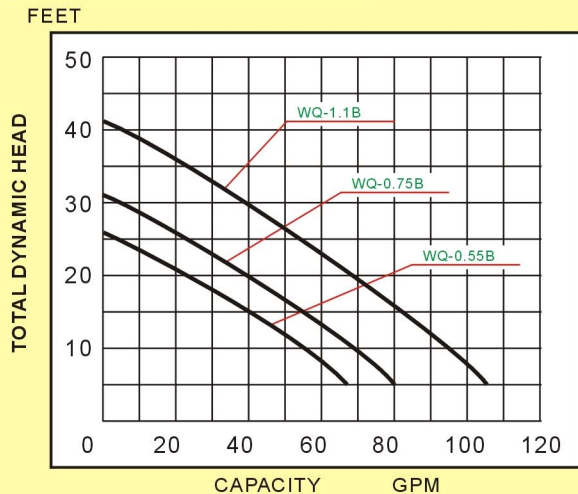
Non-clogging Submersible sewage pumps for simplex and duplex installations in small life stations, drainage systems or raw water applications, requiring solids handling capability of 1.5" diameter made specifically for: homes and farms; mobile home parks and motels; schools and hospitals; municipal package systems; industrial treatment systems; and dewatering applications.

| Model | Power | Voltage | Amp. | RPM. | GPM at head(ft) | | | | | | | Max. Head | Discharge Solids | Weight |
|----------|---------|---------|-------|------|-----------------|----|----|----|----|----|----|-----------|------------------|--------|
| | | | | | 10 | 15 | 20 | 25 | 30 | 35 | 40 | | | |
| WQ-0.55B | 0.75 HP | 115V | 7.2 A | 3450 | 55 | 48 | 42 | 31 | 25 | 13 | 6 | 26 ft | 1.5" | 29 lbs |
| WQ-0.75B | 1 HP | 115V | 9 A | 3450 | 75 | 64 | 45 | 27 | 9 | | | 31 ft | 1.5" | 30 lbs |
| WQ-1.1B | 1.5 HP | 115V | 15 A | 3450 | 100 | 88 | 73 | 57 | 39 | 26 | 10 | 41 ft | 1.5" | 32 lbs |

PARTS SPECIFICATIONS

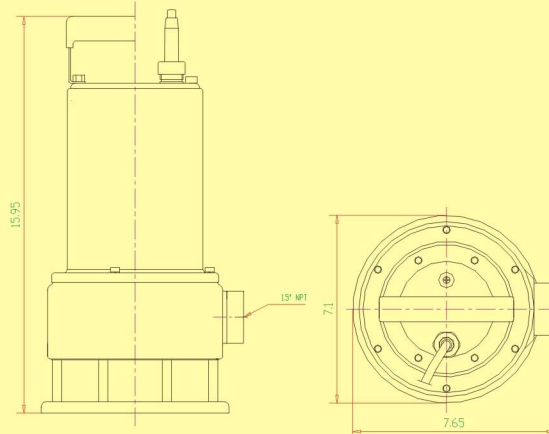
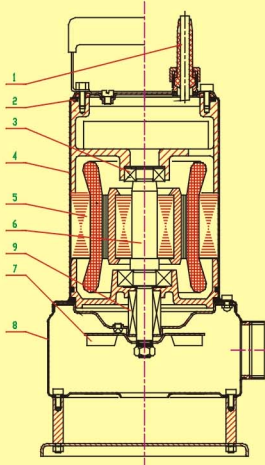
- Power Cable:** Water proof 30 ft. cord, pressure grommet for sealing and strain relief.
- O-ring:** Buna-N, assures positive sealing against oil leakage.
- Bearing:** Upper and lower ball bearing construction to carry all radial and thrust loads.
- Casing (Motor Housing):** Corrosion resistant AISI 304 SS designed for long lasting performance.
- Motor:** 2 poles, squirrel cage induction, air filled single phase, permanent split capacitor type, built-in thermal protector, with automatic reset.
- Shaft:** Corrosion resistance stainless steel.
- Impeller:** AISI type 304 stainless steel.
- Volute Casing:** Corrosion resistant AISI 304 SS. Designed for easy installation.
- Dual Mechanical Seals:** stainless steel metal parts, Buna-N elastomers.
Upper Seal: Carbon VS Ceramic
Lower Seal: Silicon Carbide VS Silicon Carbide

PERFORMANCE CURVE



DIMENSIONS

(All dimensions are in inches. Do not use for construction purpose.)



**DON NOT USE THIS PUMP TO TRANSFER FLAMMABLE LIQUIDS
THIS PUMP IS NOT RECOMMENDED FOR USE IN LOCATIONS SPECIFIED AS HAZARDOUS**



F & Q PUMPS

SUMBERSIBLE SEWAGE PUMPS WQ-BS SEIRES



APPLICATIONS

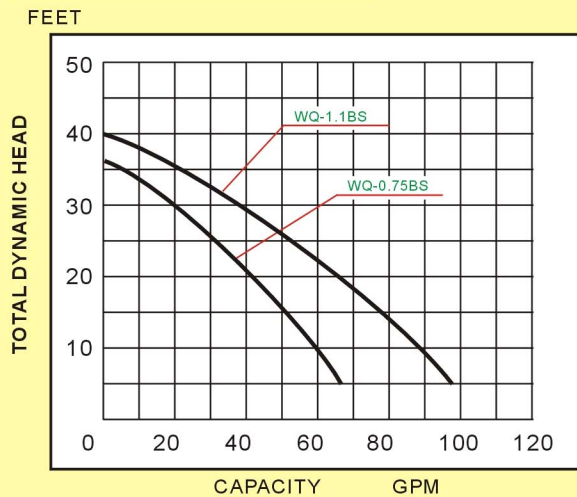
Non-clogging Submersible sewage pumps for simplex and duplex installations in small life stations, drainage systems or raw water applications, requiring solids handling capability of 1.5" diameter made specifically for: homes and farms; mobile home parks and motels; schools and hospitals; municipal package systems; industrial treatment systems; and dewatering applications.

| Model | Power | Voltage | Amp. | RPM. | GPM at head(ft) | | | | | | Max. Head | Discharge Solids | Weight |
|-----------|--------|---------|------|------|-----------------|----|----|----|----|----|-----------|------------------|--------|
| | | | | | 5 | 10 | 15 | 20 | 25 | 30 | | | |
| WQ-0.75BS | 1 HP | 115V | 9 A | 3450 | 66 | 60 | 55 | 42 | 32 | 15 | 36 ft | 1.5" | 36 lbs |
| WQ-1.1BS | 1.5 HP | 115V | 15 A | 3450 | 97 | 90 | 82 | 65 | 46 | 30 | 40 ft | 1.5" | 39 lbs |

PARTS SPECIFICATIONS

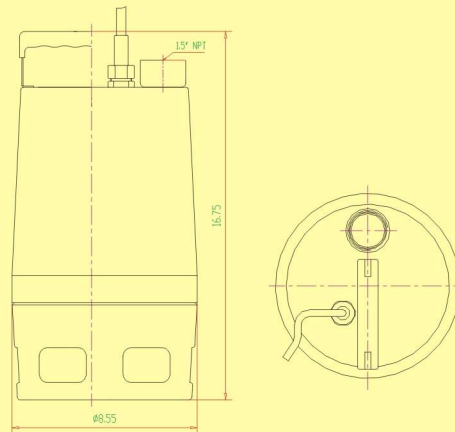
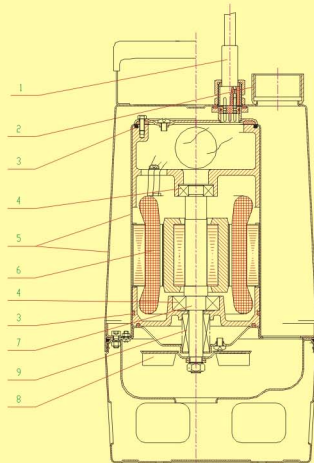
- 1. Power Cable:** Water proof 30 ft. cord, pressure grommet for sealing and strain relief.
- 2. Discharge:** 1.5" corrosion resistant AISI 304 SS top threaded hose coupling design.
- 3. O-ring:** Buna-N, assures positive sealing against oil leakage.
- 4. Bearing:** Upper and lower ball bearing construction to carry all radial and thrust loads.
- 5. Casing and Motor Housing:** Corrosion resistant AISI 304 SS designed for long lasting performance.
- 6. Motor:** 2 poles, squirrel cage induction, air filled single phase, permanent split capacitor type, built-in thermal protector, with automatic reset.
- 7. Shaft:** Corrosion resistance stainless steel.
- 8. Impeller:** AISI type 304 stainless steel.
- 9. Dual Mechanical Seals:** stainless steel metal parts, Buna-N elastomers.
Upper Seal: Carbon VS Ceramic
Lower Seal: Silicon Carbide VS Silicon Carbide

PERFORMANCE CURVE



DIMENSIONS

(All dimensions are in inches. Do not use for construction purpose.)



**DON NOT USE THIS PUMP TO TRANSFER FLAMMABLE LIQUIDS
THIS PUMP IS NOT RECOMMENDED FOR USE IN LOCATIONS SPECIFIED AS HAZARDOUS**

Limited Warranty

F&Q Pumps Inc. Hereby warrants your unit, in accordance with and subject to the provisions herein contained, against defects in material and workmanship under normal use and service when properly connected for a period of 12 months or 1000 hours operation (whichever occurs first), from the date of purchase. In the event of a breakdown or failure of your unit or part thereof, within the period of 12 months or 1000 hours operation, which prevents normal working, the Company will, if your unit is returned to the company or by permission to its agent, repair the breakdown or failure and replace any defective part or the whole unit at the Company's option free of charge. Freight charges will be the User's responsibility. Spare parts are normally stocked for a period of five years and generally stocked for the life of the unit.

This warranty does not extend to or cover the unit or any part of it which, in the opinion of the Company, has worn by reasonable wear and tear, abraded or corroded by fluid pumped, run in a dry condition, operated at high temperatures or outside the technical specification of the unit. Nor does warranty extend to cover the unit or any part of it which has been damaged or rendered defective by accident, willful act, negligence (other than that by the Company), usage of other than the Company's parts, operation on voltages or frequencies other than indicated on the rating plate, incorrectly set voltage regulator, electrical fusion, lightning or by other major forces. This warranty is an exclusive warranty and is in lieu of all other warranties and conditions, expressed or implied, whether statutory or otherwise. The Company shall not be liable for any loss or damage of any kind whatsoever (including injury or death to persons or animals or loss or damage to property) whether suffered or incurred by the user or by some third party where such loss or damage arises in relation to or as a result of the unit or any part thereof, and whether arising wholly or partly as a result of negligence of the Company, its agents or otherwise. Without limitation upon the provisions of the foregoing provisions of this clause, the Company shall not be liable for any consequential loss or damage (including financial loss or damage) and in no event and in not circumstances shall the liability of the Company to the user or any third party exceed the total purchase price of the unit or parts thereof in question.

Some states and countries do not allow limitations on how long an implied warranty lasts or the exclusion or limitation of incidental or consequential damages, so the above limitations or exclusions may not apply to you. This warranty gives you specific legal rights and you may also have other rights which vary from state to state and country to country.

IMPORTANT: Please be noted that all returns MUST get a [RMA Number](#) first. Any returns without a [Return Approval Form](#) with RMA# will be refused. Thank you!

Ver: FC202605